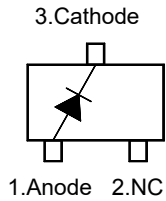


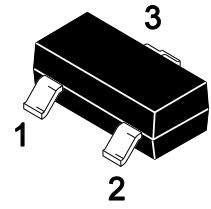
Features

- Low Forward Voltage
- Fast Recovery Time

Equivalent Circuit



SOT-23



1.Anode 2.NC 3.Cathode

Marking Code : 5D

Absolute Maximum Ratings ($T_A=25^\circ\text{C}$)

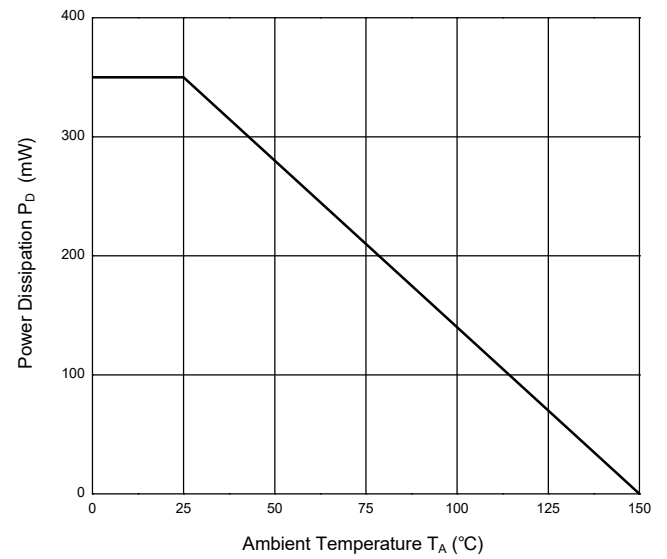
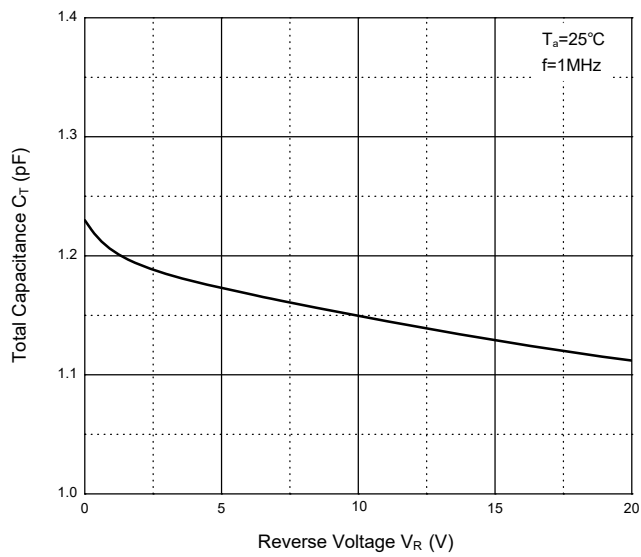
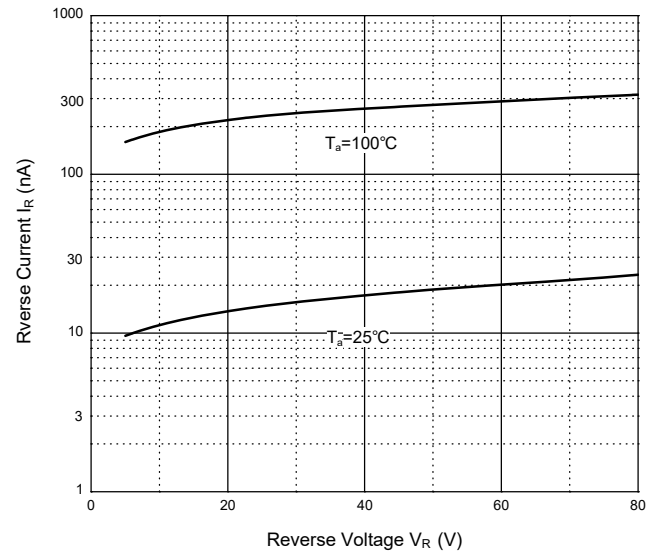
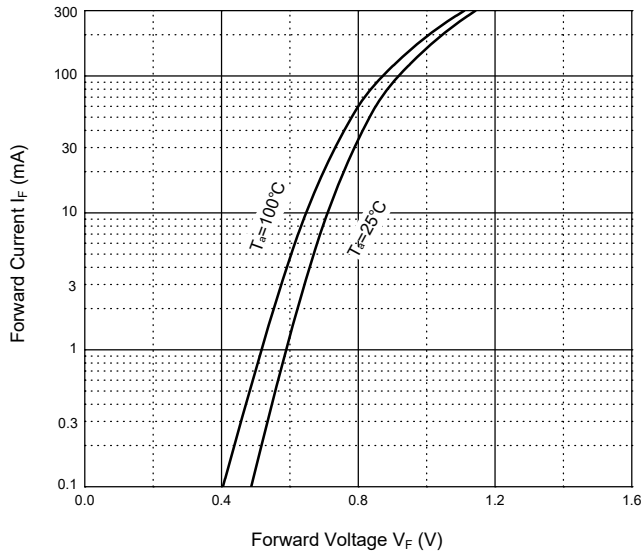
Parameter	Symbol	Value	Unit
Maximum Repetitive Reverse Voltage	V_{RRM}	85	V
Reverse Voltage	V_R	80	V
Average Rectified Forward Current	$I_{F(AV)}$	100	mA
Maximum Peak Forward Current	I_{FM}	300	mA
Non-Repetitive Peak Forward Surge Current (10 ms)	I_{FSM}	2	A
Maximum Power Dissipation	P_D	350	mW
Junction Temperature	T_J	150	$^\circ\text{C}$
Storage Temperature Range	T_{STG}	-55 to +150	$^\circ\text{C}$

Electrical Characteristics ($T_A=25^\circ\text{C}$)

Parameter	Symbol	Typ.	Max.	Unit
Forward Voltage at $I_F = 1 \text{ mA}$ at $I_F = 10 \text{ mA}$ at $I_F = 100 \text{ mA}$	V_F	0.6 0.72 0.9	-- -- 1.2	V
Reverse Current at $V_R = 20 \text{ V}$ at $V_R = 75 \text{ V}$	I_R	-- --	0.1 0.5	μA
Typical Junction Capacitance at $V_R = 0 \text{ V}$, $f = 1 \text{ MHz}$	C_j	--	4	pF
Maximum Reverse Recovery Time at $I_F = 10 \text{ mA}$, $V_R = 6 \text{ V}$, $I_{RR} = 1 \text{ mA}$, $R_L = 100 \ \Omega$	T_{rr}	--	4	nS



Typical Characteristic Curves



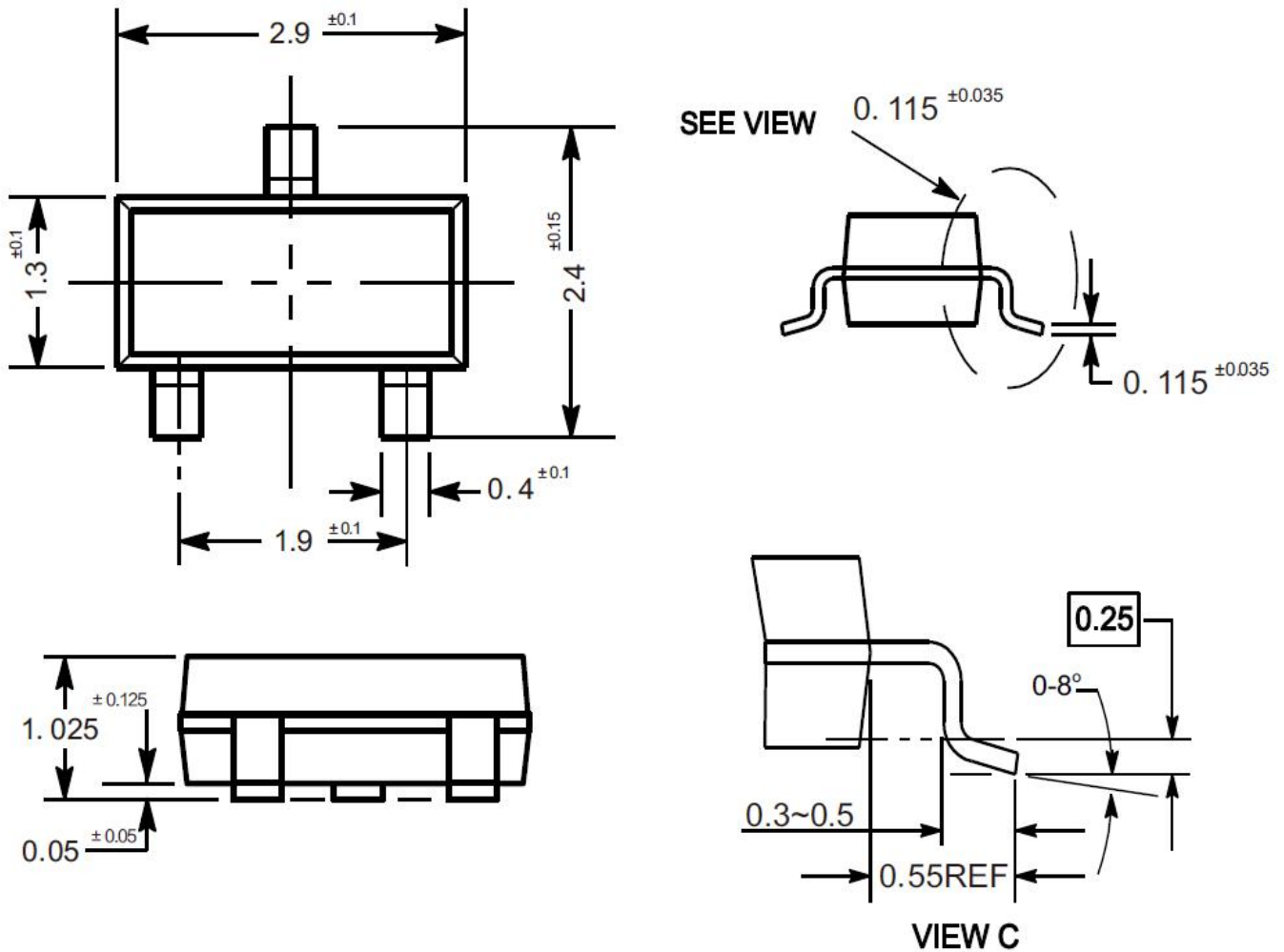


1SS193 Silicon Epitaxial Planar Switching Diode

Package Outline

SOT-23

Dimensions in mm



Ordering Information

Device	Package	Shipping
1SS193	SOT-23	3,000PCS/Reel&7inches