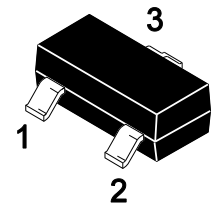


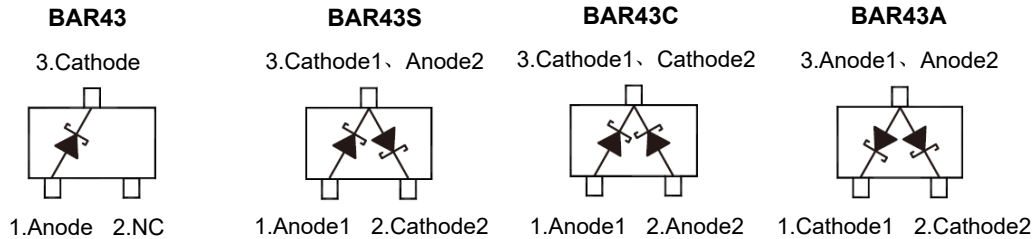
## Features

- Low current leakage
- Fast switching

## SOT-23



## Equivalent Circuit



## Marking Code :

BAR43 : LA  
 BAR43A : LB  
 BAR43C : LC  
 BAR43S : LD

## Absolute Maximum Ratings ( $T_A=25^\circ\text{C}$ )

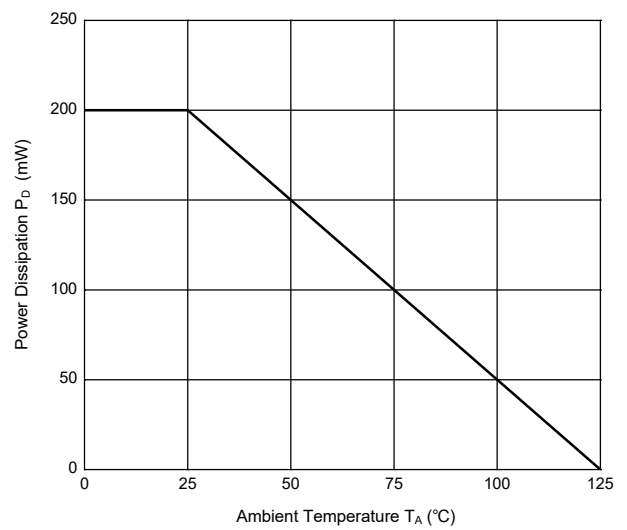
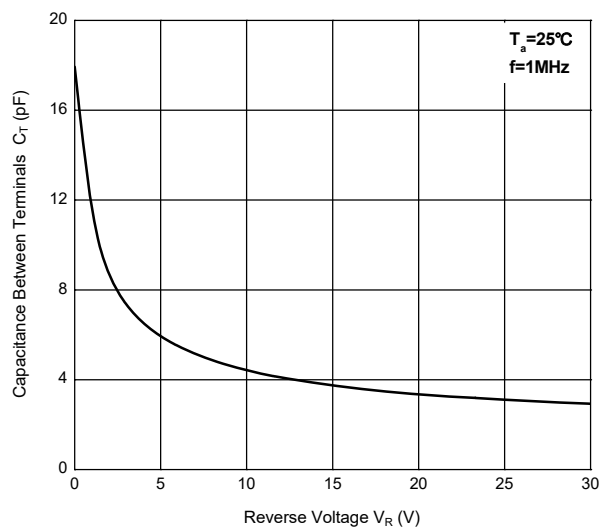
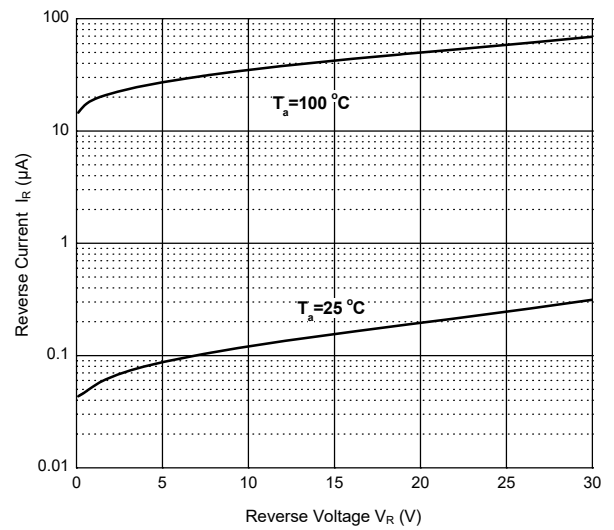
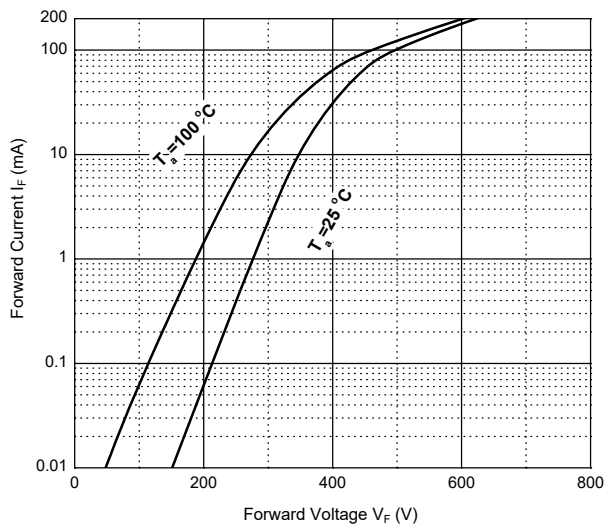
Parameter	Symbols	Value	Unit
Maximum DC Blocking Voltage	$V_R$	30	V
Forward Continuous Current	$I_F$	200	mA
Non-Repetitive Peak Forward Surge Current at 8.3ms	$I_{FSM}$	750	mA
Power Dissipation	$P_D$	200	mW
Thermal Resistance Junction to Ambient Air	$R_{\theta JA}$	500	$^\circ\text{C}/\text{W}$
Junction Temperature	$T_J$	150	$^\circ\text{C}$
Storage Temperature Range	$T_{STG}$	-55 to +150	$^\circ\text{C}$

## Electrical Characteristics ( $T_A=25^\circ\text{C}$ )

Parameter	Symbols	Min.	Max.	Unit
Forward Voltage at $I_F = 2 \text{ mA}$ at $I_F = 15 \text{ mA}$ at $I_F = 100 \text{ mA}$	$V_F$	-- -- --	0.33 0.45 0.8	V
Reverse Current at $V_R = 25 \text{ V}$	$I_R$	--	0.5	$\mu\text{A}$
Breakdown Voltage at $I_R = 100 \mu\text{A}$	$V_{R(BR)}$	30	--	V
Reverse Recovery Time at $I_F = I_R = 10 \text{ mA}$ , $I_{rr} = 0.1 \times I_R$ , $R_L = 100 \Omega$	$T_{rr}$	--	5	ns



## Typical Characteristic Curves



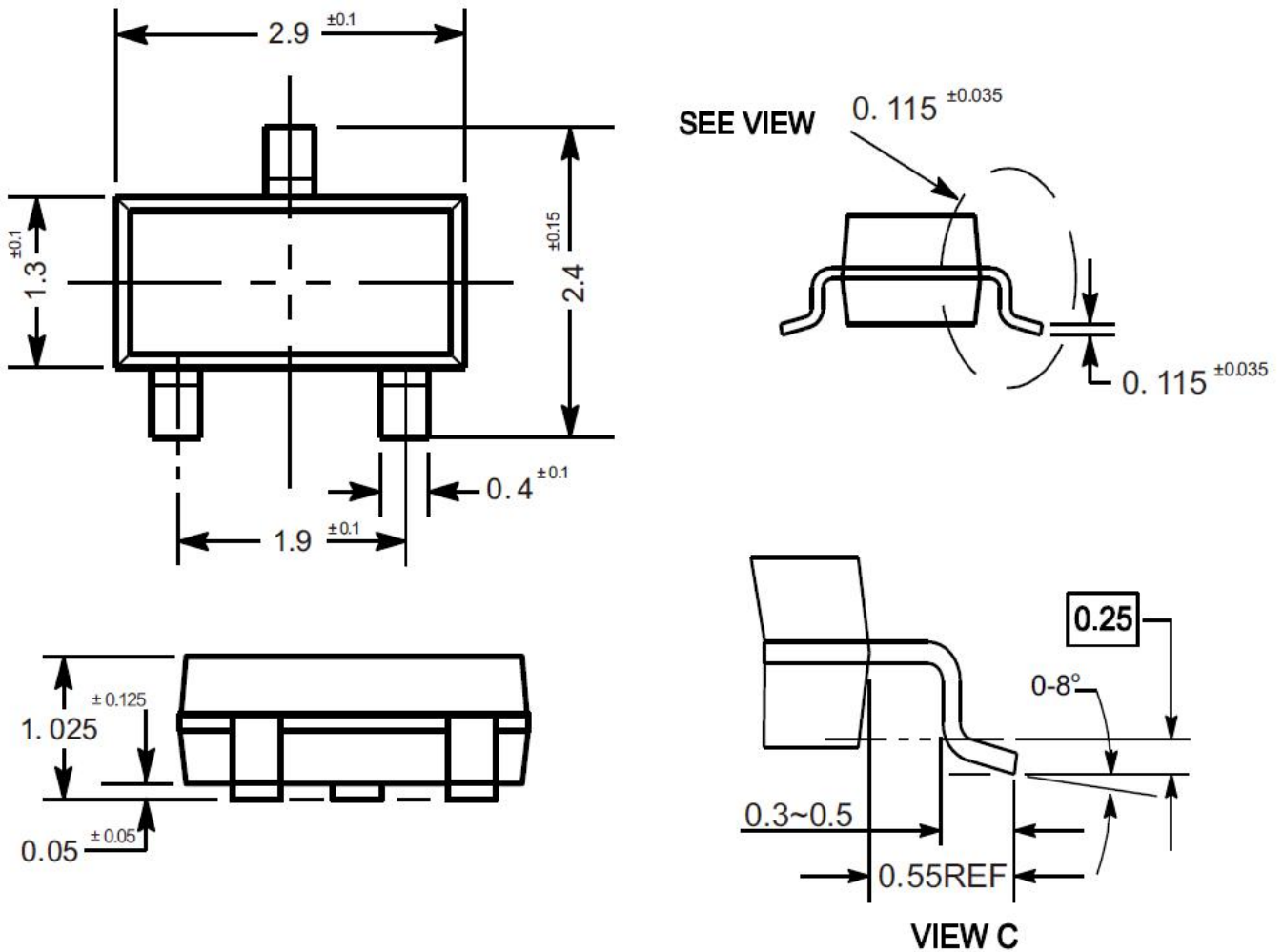


# BAR43 Series Schottky Barrier Rectifiers

## Package Outline

SOT-23

Dimensions in mm



## Ordering Information

Device	Package	Shipping
BAR43 Series	SOT-23	3,000PCS/Reel&7inches