

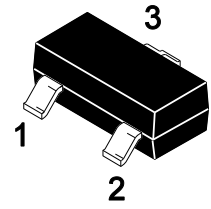


BAS21 Series Silicon Epitaxial Planar Switching Diode

Features

- High Conductance
- Fast Switching Speed
- For General Purpose Switching Applications

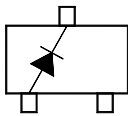
SOT-23



Equivalent Circuit

BAS21

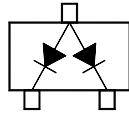
3.Cathode



1.Anode 2.NC

BAS21A

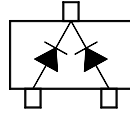
3.Anode1、Anode2



1.Cathode1 2.Cathode2

BAS21C

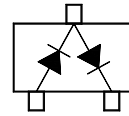
3.Cathode1、Cathode2



1.Anode1 2.Anode2

BAS21S

3.Cathode1、Anode2



1.Anode1 2.Cathode2

Marking Code :

BAS21 : HC

BAS21A : HA

BAS21C : HD

BAS21S : HB

Absolute Maximum Ratings ($T_A=25^\circ\text{C}$)

Parameter	Symbol	Value	Unit
Repetitive Peak Reverse Voltage	V_{RRM}	250	V
Working Peak Reverse Voltage	V_{RWM}	250	V
DC Blocking Voltage	V_R	250	V
Continuous Forward Current	I_{FM}	400	mA
Average Rectified Output Current	I_O	200	mA
Non-repetitive Peak Forward Surge Current at $t=8.3\text{ms}$	I_{FSM}	2.5	A
Repetitive Peak Forward Surge Current	I_{FRM}	625	mA
Power Dissipation	P_D	225	mW
Thermal Resistance Junction to Ambient	$R_{\theta JA}$	555	$^\circ\text{C/W}$
Junction Temperature	T_J	150	$^\circ\text{C}$
Storage Temperature Range	T_{STG}	-55 to +150	$^\circ\text{C}$



BAS21 Series

Silicon Epitaxial Planar Switching Diode

Electrical Characteristics ($T_A=25^\circ\text{C}$)

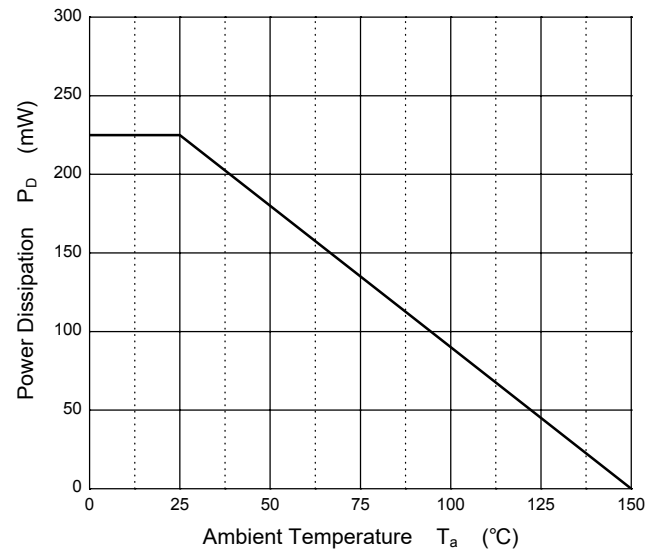
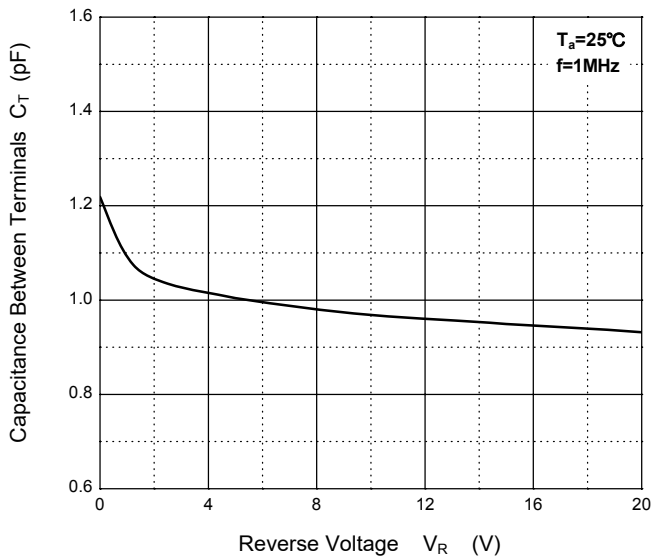
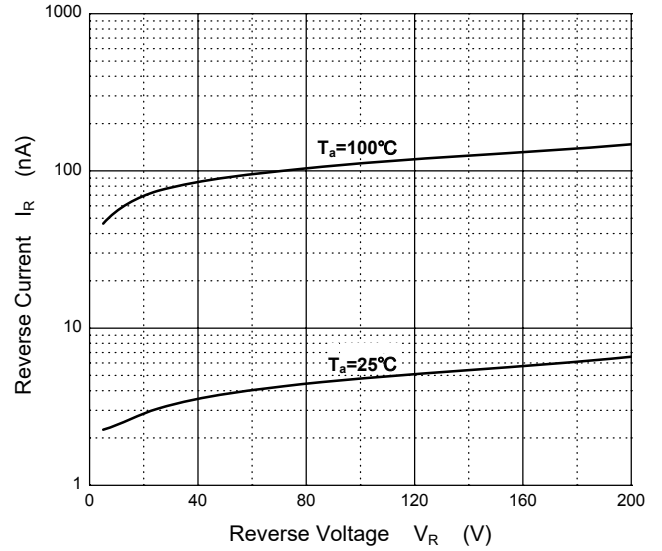
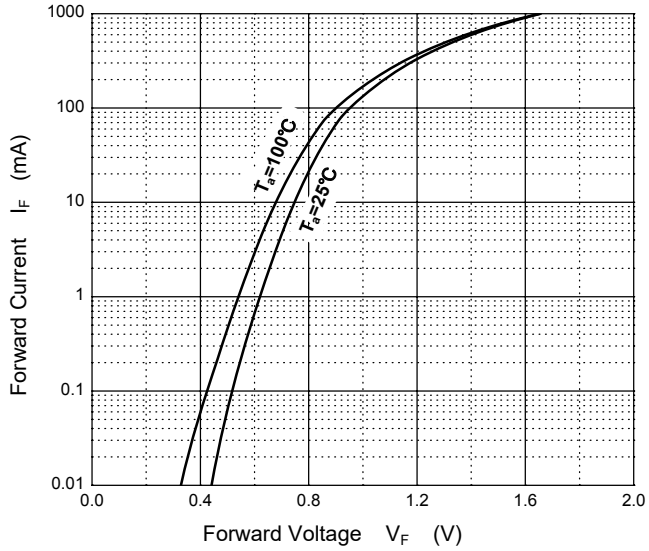
Parameter	Symbol	Min.	Max.	Unit
Forward Voltage at $I_F=100\text{ mA}$ at $I_F=200\text{ mA}$	V_F	-- --	1 1.25	V
Reverse Breakdown Voltage at $I_R = 100\ \mu\text{A}$	$V_{(BR)R}$	250	--	V
Reverse Current at $V_R = 200\text{ V}$	I_R	--	0.1	μA
Typical Junction Capacitance at $V_R=0\text{ V}$, $f=1\text{ MHz}$	C_j	--	5	pF
Maximum Reverse Recovery Time at $I_F = I_R= 30\text{ mA}$, $I_{rr}=0.1\times I_R$, $R_L = 100\ \Omega$	T_{rr}	--	50	nS



BAS21 Series

Silicon Epitaxial Planar Switching Diode

Typical Characteristic Curves





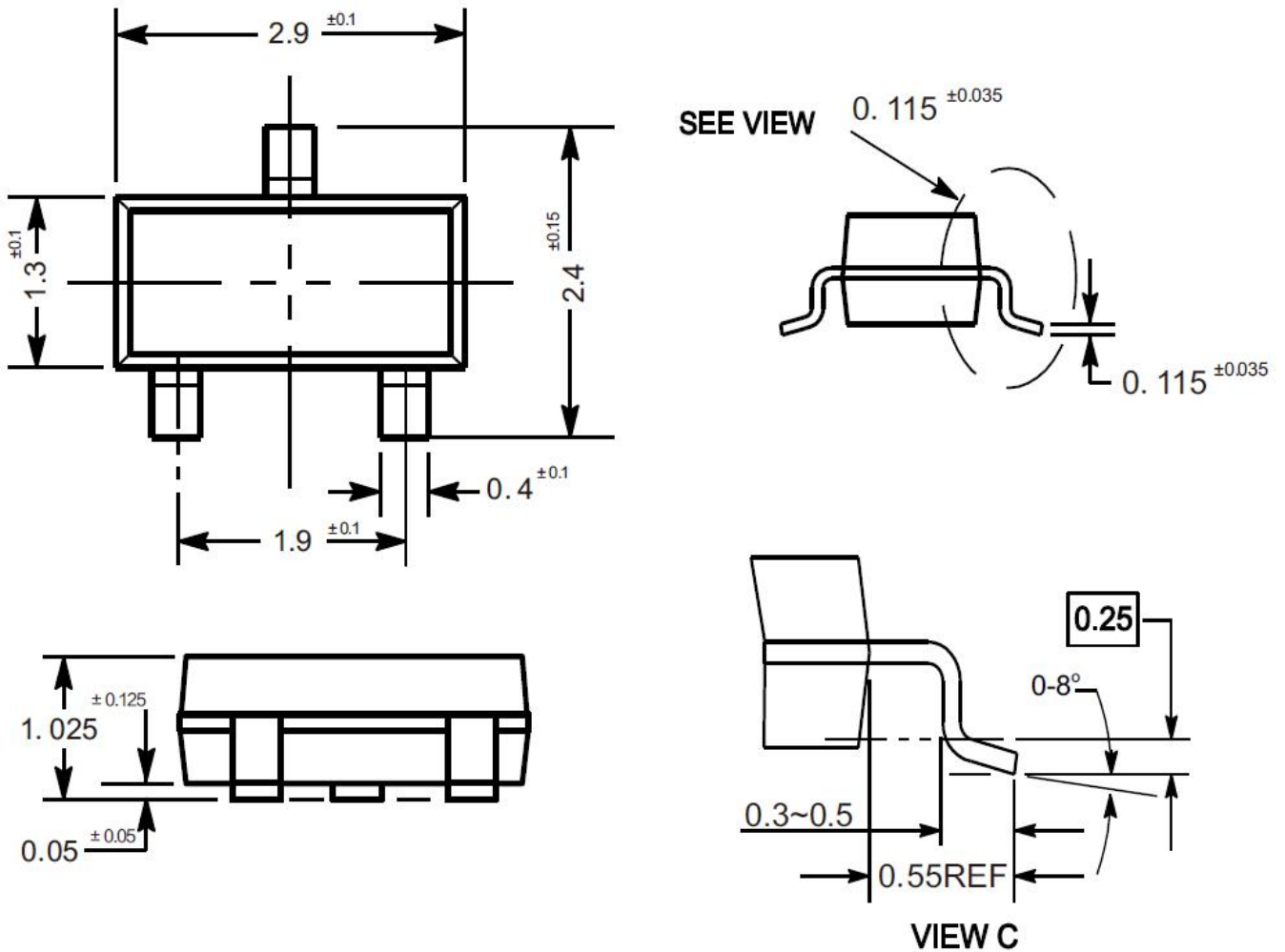
BAS21 Series

Silicon Epitaxial Planar Switching Diode

Package Outline

SOT-23

Dimensions in mm



Ordering Information

Device	Package	Shipping
BAS21 Series	SOT-23	3,000PCS/Reel&7inches