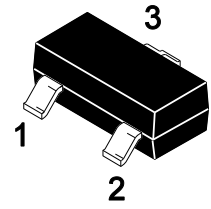


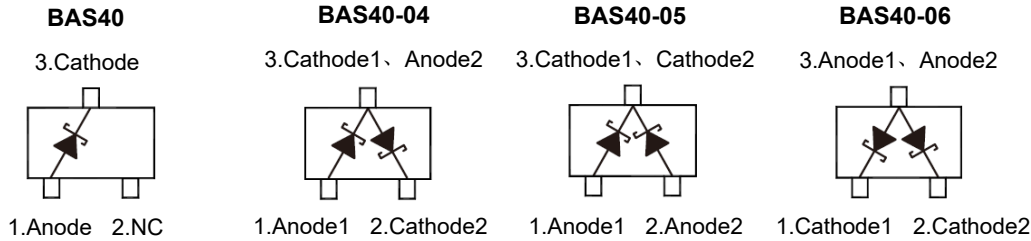
Features

- Low forward Voltage
- Fast switching

SOT-23



Equivalent Circuit



Marking Code :

BAS40 : B4
 BAS40-04 : B44
 BAS40-05 : B45
 BAS40-06 : B46

Absolute Maximum Ratings (T_A=25°C)

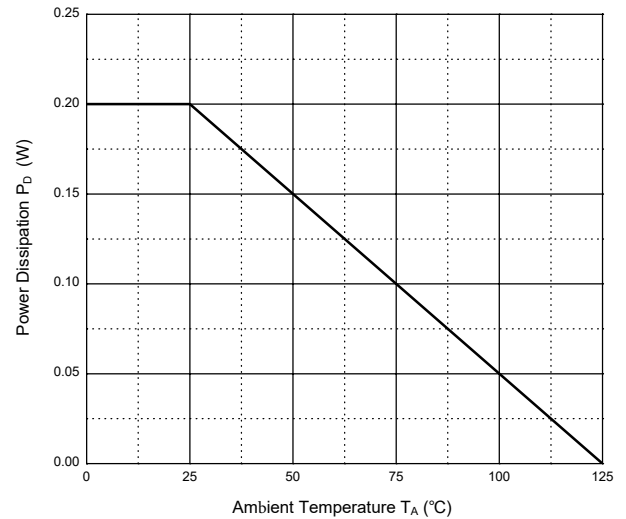
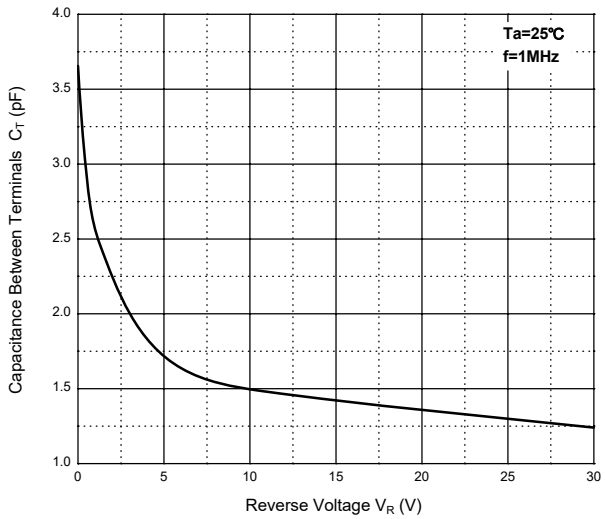
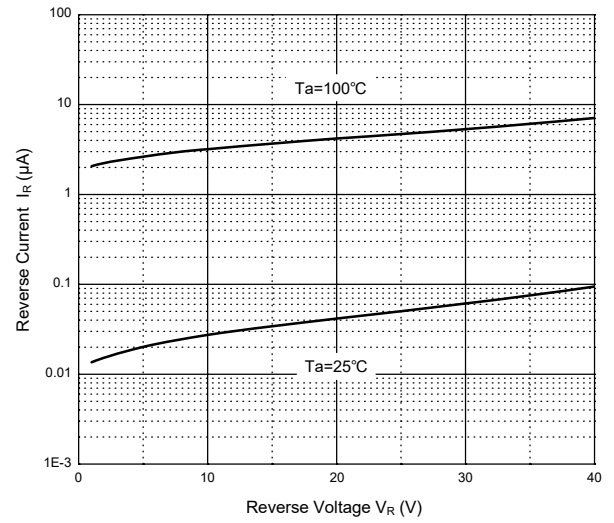
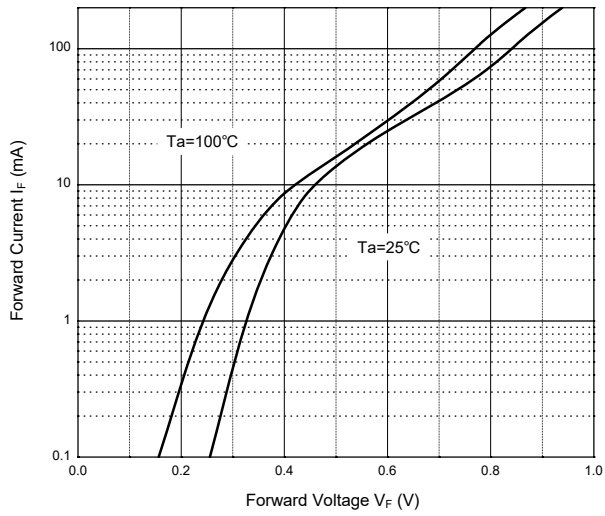
Parameter	Symbols	Value	Unit
Repetitive Peak Reverse Voltage	V _{RRM}	40	V
Average Rectified Forward Current	I _{F(AV)}	200	mA
Non-Repetitive Peak Forward Surge Current at 8.3ms	I _{FSM}	600	mA
Power Dissipation	P _D	200	mW
Thermal Resistance Junction to Ambient Air	R _{θJA}	625	°C/W
Junction Temperature	T _J	125	°C
Storage Temperature Range	T _{STG}	-55 to +125	°C

Electrical Characteristics (T_A=25°C)

Parameter	Symbols	Min.	Max.	Unit
Forward Voltage at I _F = 1 mA at I _F = 40 mA	V _F	--	0.38 1	V
Reverse Current at V _R = 30 V	I _R	--	0.2	μA
Breakdown Voltage at I _R = 10 μA	V _{R(BR)}	40	--	V
Total Capacitance at V _R = 0 V, f = 1 MHz	C _T	--	5	pF
Reverse Recovery Time at I _F = I _R = 5 mA, I _{rr} = 0.1xI _R , R _L = 100 Ω	T _{rr}	--	5	ns



Typical Characteristic Curves

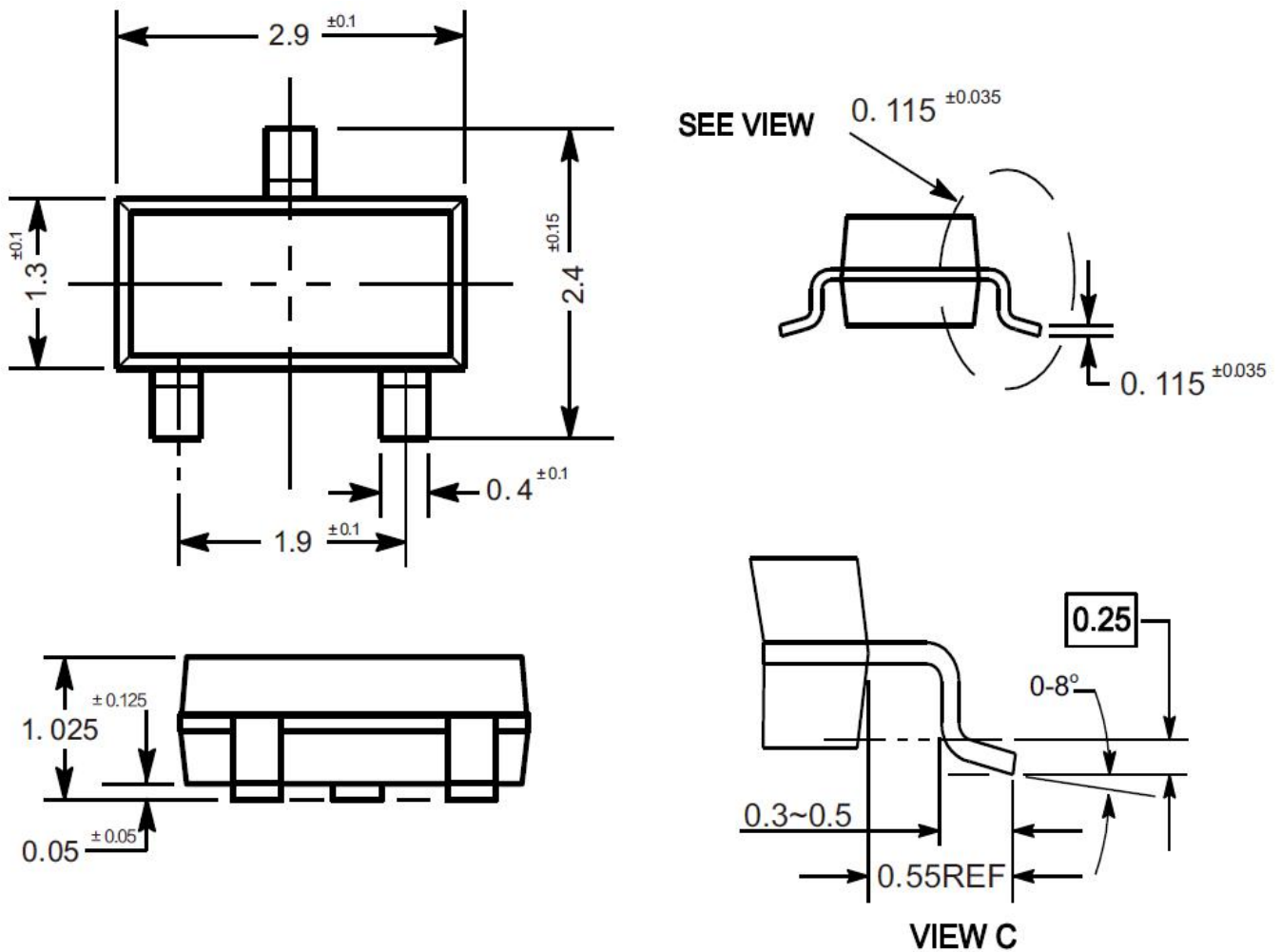




Package Outline

SOT-23

Dimensions in mm



Ordering Information

Device	Package	Shipping
BAS40/-04/-05/-06	SOT-23	3,000PCS/Reel&7inches