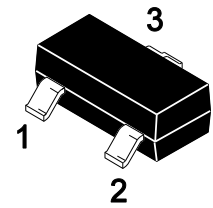


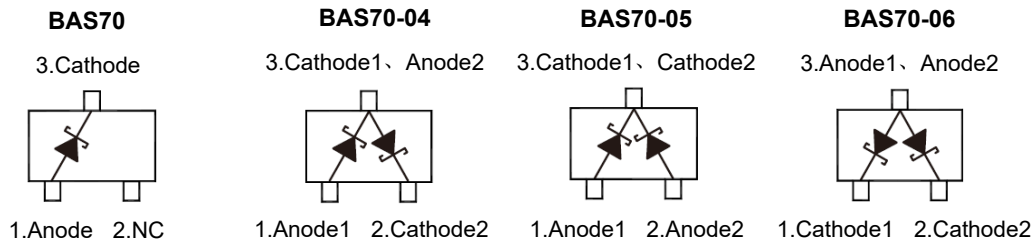
### Features

- Low turn-on voltage
- Fast switching

### SOT-23



### Equivalent Circuit



### Marking Code :

BAS70 : B70  
 BAS70-04 : B74  
 BAS70-05 : B75  
 BAS70-06 : B76

### Absolute Maximum Ratings ( $T_A=25^\circ\text{C}$ )

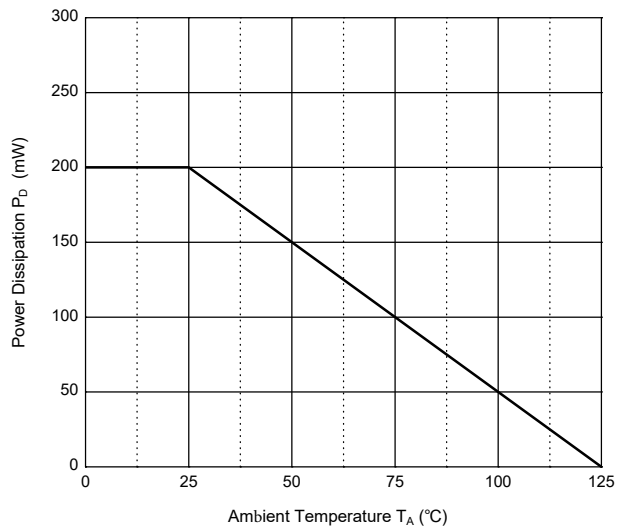
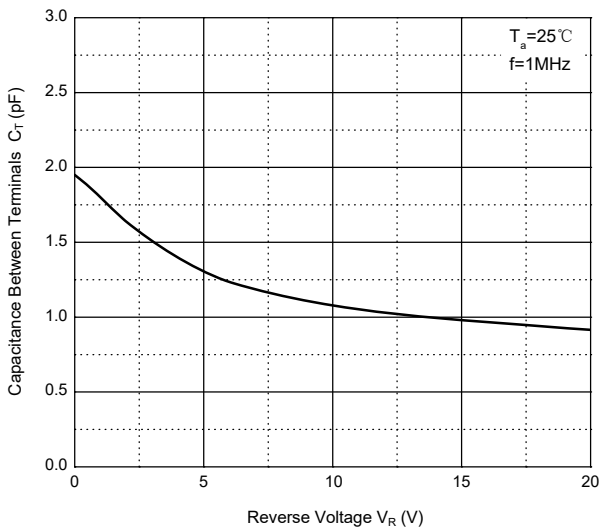
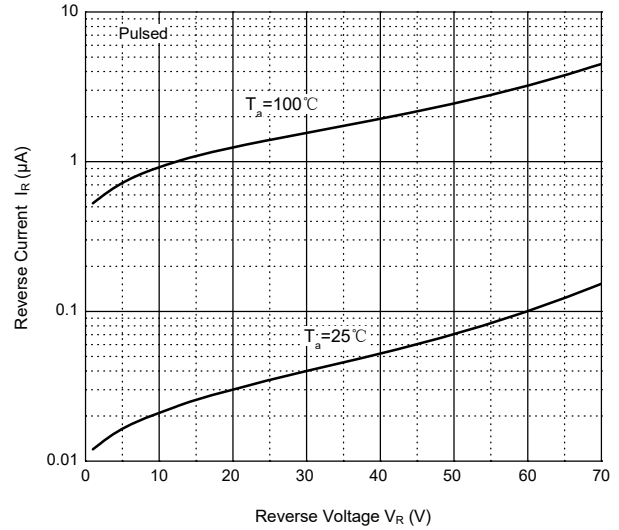
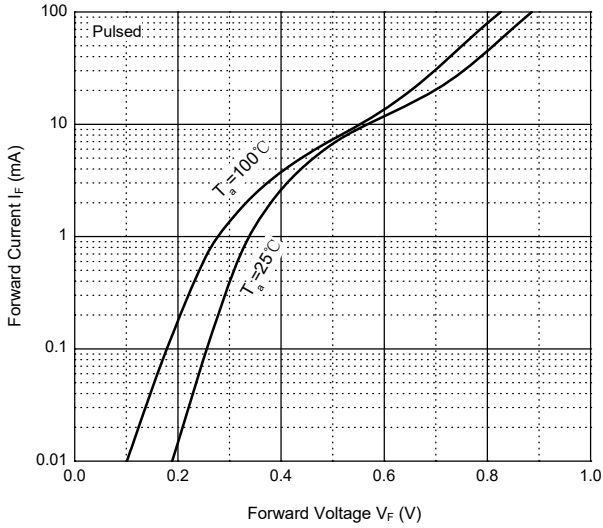
Parameter	Symbols	Value	Unit
Maximum DC Blocking Voltage	$V_R$	70	V
Forward Continuous Current	$I_F$	70	mA
Non-Repetitive Peak Forward Surge Current at 8.3ms	$I_{FSM}$	100	mA
Power Dissipation	$P_D$	200	mW
Thermal Resistance Junction to Ambient Air	$R_{\theta JA}$	500	$^\circ\text{C/W}$
Junction Temperature	$T_J$	125	$^\circ\text{C}$
Storage Temperature Range	$T_{STG}$	-55 to +125	$^\circ\text{C}$

### Electrical Characteristics ( $T_A=25^\circ\text{C}$ )

Parameter	Symbols	Min.	Max.	Unit
Forward Voltage at $I_F = 1 \text{ mA}$ at $I_F = 15 \text{ mA}$	$V_F$	--	0.41 1	V
Reverse Current at $V_R = 50 \text{ V}$	$I_R$	--	0.1	$\mu\text{A}$
Breakdown Voltage at $I_R = 10 \mu\text{A}$	$V_{R(BR)}$	70	--	V
Total Capacitance at $V_R = 1 \text{ V}$ , $f = 1 \text{ MHz}$	$C_T$	--	2	pF
Reverse Recovery Time at $I_F = I_R = 10 \text{ mA}$ , $I_{rr} = 0.1 \times I_R$ , $R_L = 100 \Omega$	$T_{rr}$	--	5	ns



### Typical Characteristic Curves



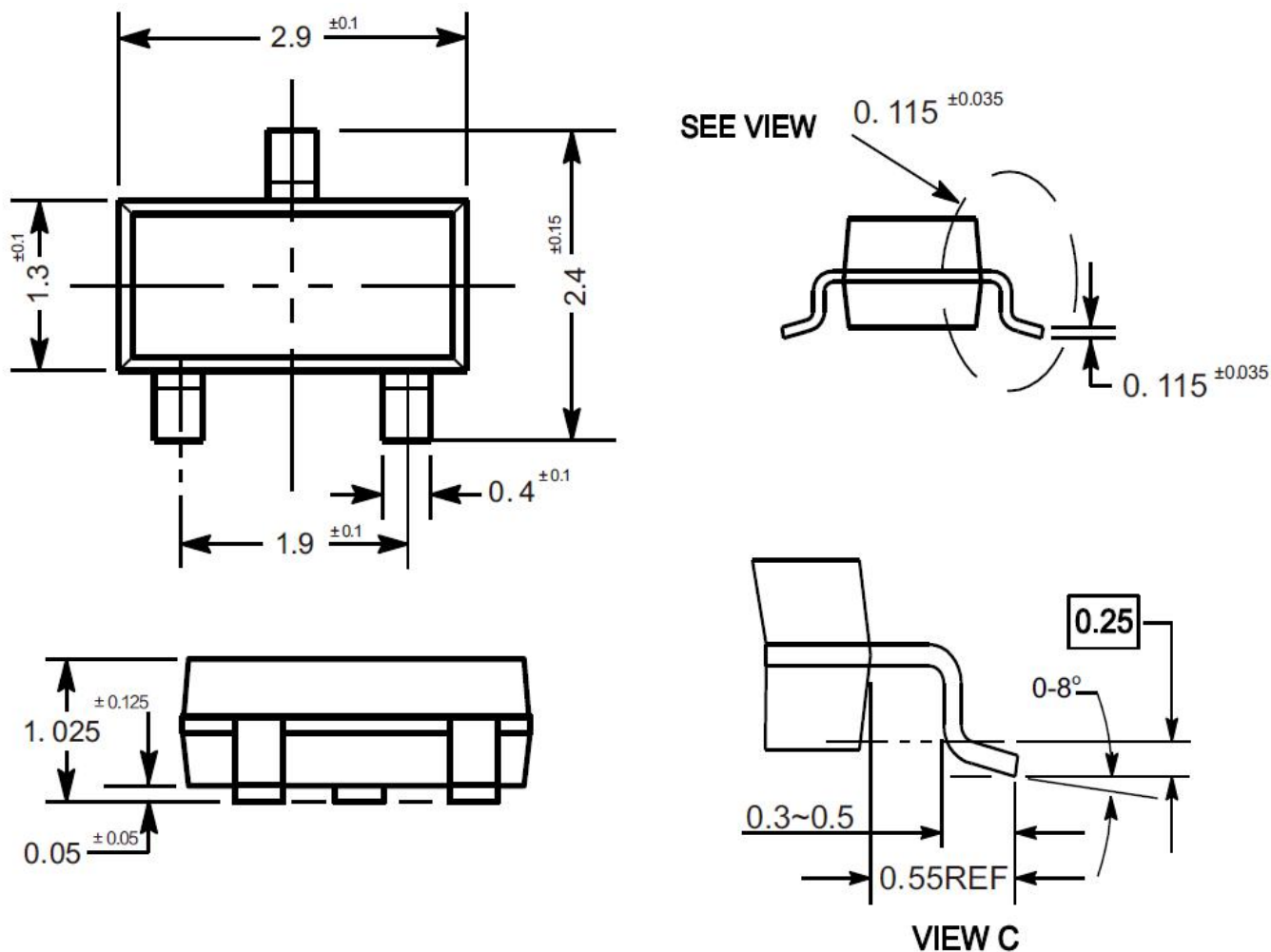


# BAS70/-04/-05/-06 Schottky Barrier Rectifiers

## Package Outline

SOT-23

Dimensions in mm



## Ordering Information

Device	Package	Shipping
BAS70/-04/-05/-06	SOT-23	3,000PCS/Reel&7inches