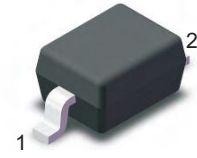


### Features

- Fast switching speed
- High surge capability
- High current capability
- Low power loss, high efficiency

SOD-323



1.Cathode  2.Anode

Marking Code : A70

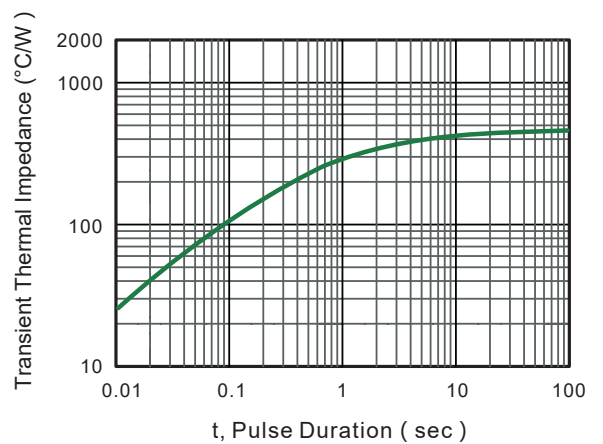
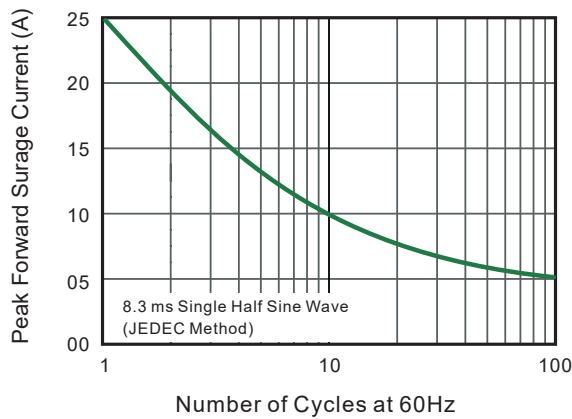
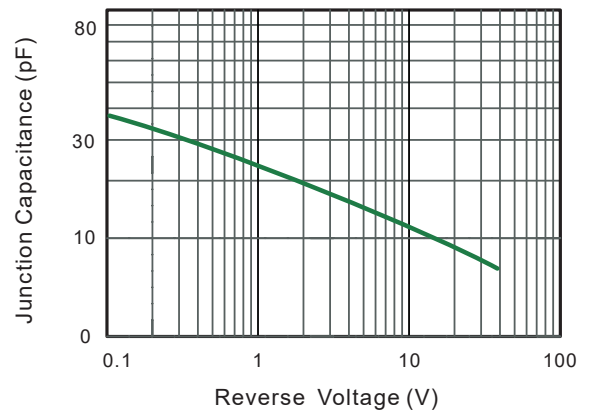
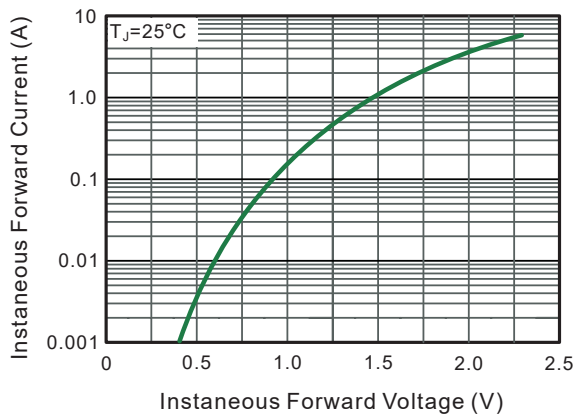
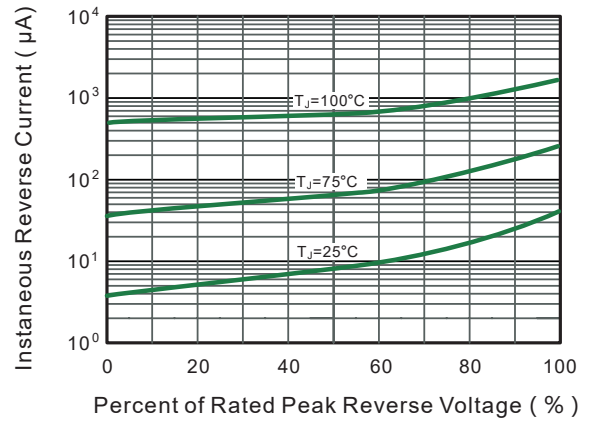
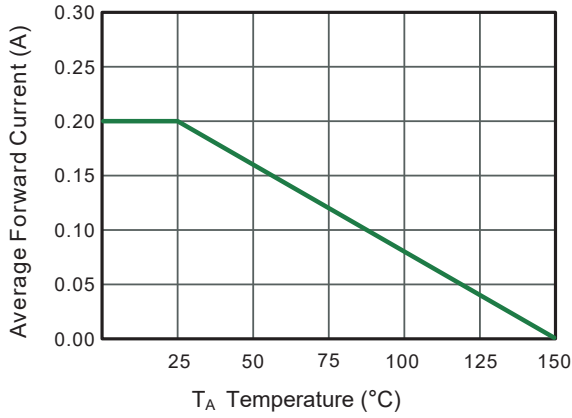
### Maximum Ratings and Electrical Characteristics

Ratings at 25°C ambient temperature unless otherwise specified.

Parameter	Symbols	BAS70WS	Units
Maximum Repetitive Peak Reverse Voltage	$V_{RRM}$	70	V
Maximum Average Forward Current at $T_A=25^\circ\text{C}$	$I_O$	0.2	A
Power Dissipation	$P_D$	225	mW
Peak Forward Surge Current 8.3 ms Single Half Sine Wave Superimposed on Rated Load (JEDEC method)	$I_{FSM}$	25	A
Maximum Forward Voltage at $I_F=1.0\text{ mA}$ at $I_F=10\text{ mA}$ at $I_F=15\text{ mA}$	$V_F$	0.47 0.75 1.0	V
Reverse Breakdown Voltage at $I_B=10\mu\text{A}$	$V_{(BR)R}$	70 (Min.)	V
Maximum DC Reverse Current at Rated DC Blocking Voltage at $V_R=50\text{V}$ at $V_R=70\text{V}$	$I_R$	0.1 1.0	$\mu\text{A}$
Typical Junction Capacitance at $V_R=0\text{V}$ , $f=1\text{ MHz}$	$C_J$	30	pF
Operating Junction Temperature Range	$T_J$	-55 to +150	$^\circ\text{C}$
Storage Temperature Range	$T_{STG}$	-55 to +150	$^\circ\text{C}$



### Typical Characteristic Curves





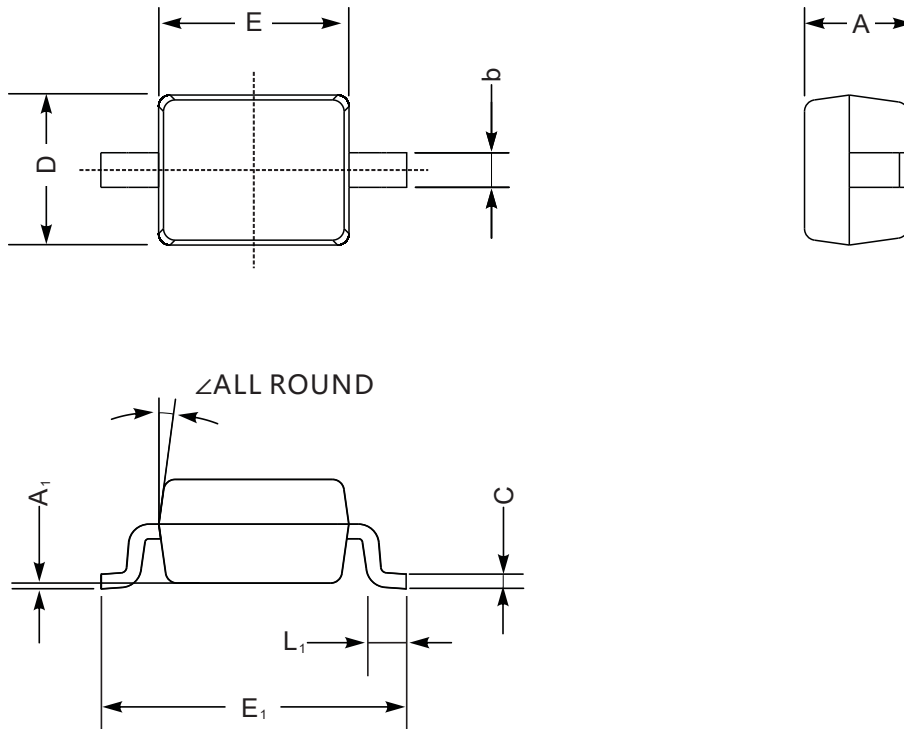
# BAS70WS

## Schottky Barrier Diode

### Package Outline

SOD-323

Dimensions in mm



UNIT		A	C	D	E	E <sub>1</sub>	b	L <sub>1</sub>	A <sub>1</sub>	∠
mm	max	1.1	0.15	1.4	1.8	2.75	0.4	0.45	0.2	9°
	min	0.8	0.08	1.2	1.4	2.55	0.25	0.2	—	
mil	max	43	5.9	55	70	108	16	16	8	
	min	32	3.1	47	63	100	9.8	7.9	—	