

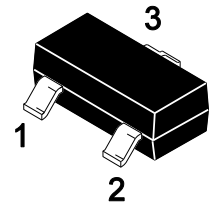


BZX84B Series Silicon Planar Zener Diodes

Features

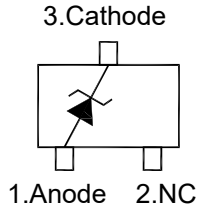
- Total power dissipation: 350mW max
- Package designed for optimal automated board assembly
- Small package size for high density applications
- Wide zener reverse voltage range:2.4V to 75V

SOT-23



1.Anode 2.NC 3.Cathode

Equivalent Circuit



Absolute Maximum Ratings at $T_A = 25\text{ }^\circ\text{C}$

Parameter	Symbols	Value	Unit
Maximum Power Dissipation	P_D	350	mW
Thermal Resistance, Junction-to-Ambient ^{Note1}	$R_{\theta JA}$	357	$^\circ\text{C/W}$
Junction Temperature	T_J	150	$^\circ\text{C}$
Storage Temperature Range	T_{STG}	-65 to +150	$^\circ\text{C}$

Note: 1. Alumina = 0.4 X 0.3 X 0.024 in,99.5% Alumina



BZX84B Series

Silicon Planar Zener Diodes

Electrical Characteristics at $T_A = 25\text{ }^\circ\text{C}$

($T_A=25^\circ\text{C}$, unless otherwise noted, $V_F < 0.9\text{ V}$ at $I_F = 10\text{ mA}$)

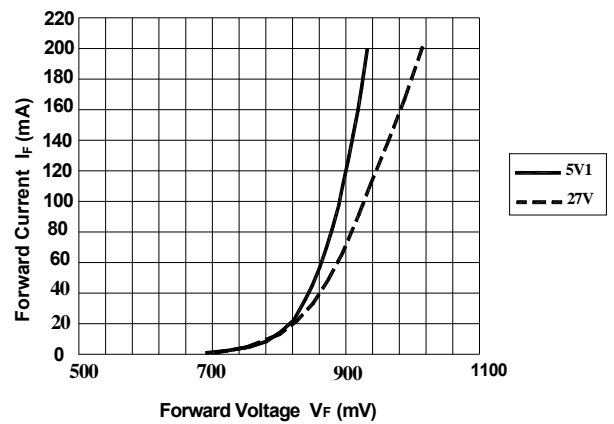
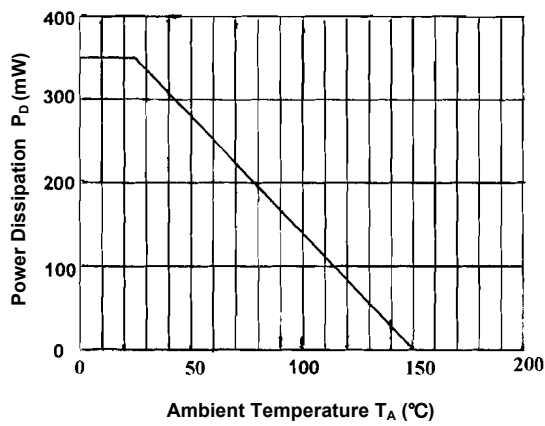
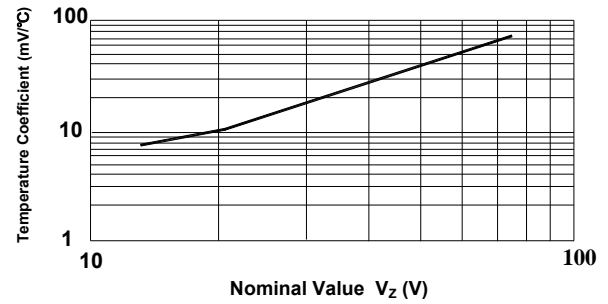
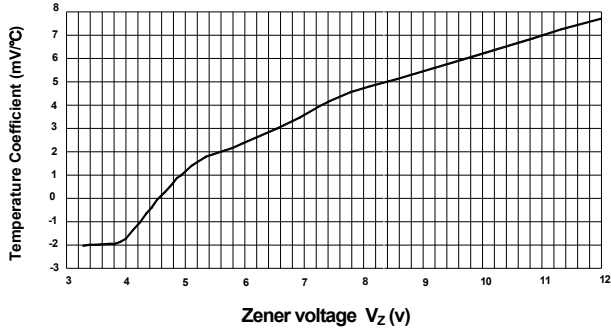
Type	Marking Code	Zener Voltage Range ^{Note1}			I_{ZT} (mA)	Dynamic Impedance	Reverse Current	
		V_{ZT} at I_{ZT}				Z_{ZT} at I_{ZT}	I_R	at V_R
		Min.(V)	Nom.(V)	Max.(V)		Max.(Ω)	Max.(μA)	(V)
BZX84B2V4	CA	2.35	2.4	2.45	5	100	50	1
BZX84B2V7	CB	2.65	2.7	2.67	5	100	20	1
BZX84B3V0	CY	2.94	3	3.06	5	95	10	1
BZX84B3V3	CZ	3.23	3.3	3.37	5	95	5	1
BZX84B3V6	DA	3.53	3.6	3.67	5	90	5	1
BZX84B3V9	DB	3.82	3.9	3.98	5	90	3	1
BZX84B4V3	DC	4.21	4.3	4.39	5	90	3	1
BZX84B4V7	DD	4.61	4.7	4.79	5	80	3	2
BZX84B5V1	DE	5	5.1	5.2	5	60	2	2
BZX84B5V6	DF	5.49	5.6	5.71	5	40	1	2
BZX84B6V2	DH	6.08	6.2	6.32	5	10	3	4
BZX84B6V8	DJ	6.66	6.8	6.94	5	15	2	4
BZX84B7V5	DK	7.35	7.5	7.65	5	15	1	5
BZX84B8V2	DM	8.04	8.2	8.36	5	15	0.7	5
BZX84B9V1	DN	8.92	9.1	9.28	5	15	0.5	6
BZX84B10	DP	9.8	10	10.2	5	20	0.2	7
BZX84B11	DR	10.8	11	11.2	5	20	0.1	8
BZX84B12	DX	11.8	12	12.2	5	25	0.1	8
BZX84B13	DY	12.7	13	13.3	5	30	0.1	8
BZX84B15	DZ	14.7	15	15.3	5	30	0.05	10.5
BZX84B16	EA	15.7	16	16.3	5	40	0.05	11.2
BZX84B18	EB	17.6	18	18.4	5	45	0.05	12.6
BZX84B20	EC	19.6	20	20.4	5	55	0.05	14
BZX84B22	ED	21.6	22	22.4	5	55	0.05	15.4
BZX84B24	EE	23.5	24	24.5	5	70	0.05	16.8
BZX84B27	EF	26.5	27	27.5	2	80	0.05	18.9
BZX84B30	EH	29.4	30	30.6	2	80	0.05	21
BZX84B33	EJ	32.3	33	33.7	2	80	0.05	23.1
BZX84B36	EK	35.8	36	36.7	2	90	0.05	25.2
BZX84B39	EM	38.2	39	39.8	2	130	0.05	27.3
BZX84B43	EN	42.1	43	43.9	2	150	0.05	30.1
BZX84B47	EP	46.1	47	47.9	2	170	0.05	32.9
BZX84B51	ER	50	51	52	2	180	0.05	35.7
BZX84B56	EX	54.9	56	57.2	2	200	0.05	39.2
BZX84B62	EY	60.8	62	63.2	2	215	0.05	43.4
BZX84B68	EZ	66.6	68	69.4	2	240	0.05	47.6
BZX84B75	FA	73.5	75	76.5	2	255	0.05	52.5

Note: 1. V_{ZT} is tested with 20ms pulse.



BZX84B Series Silicon Planar Zener Diodes

Typical Characteristic Curves



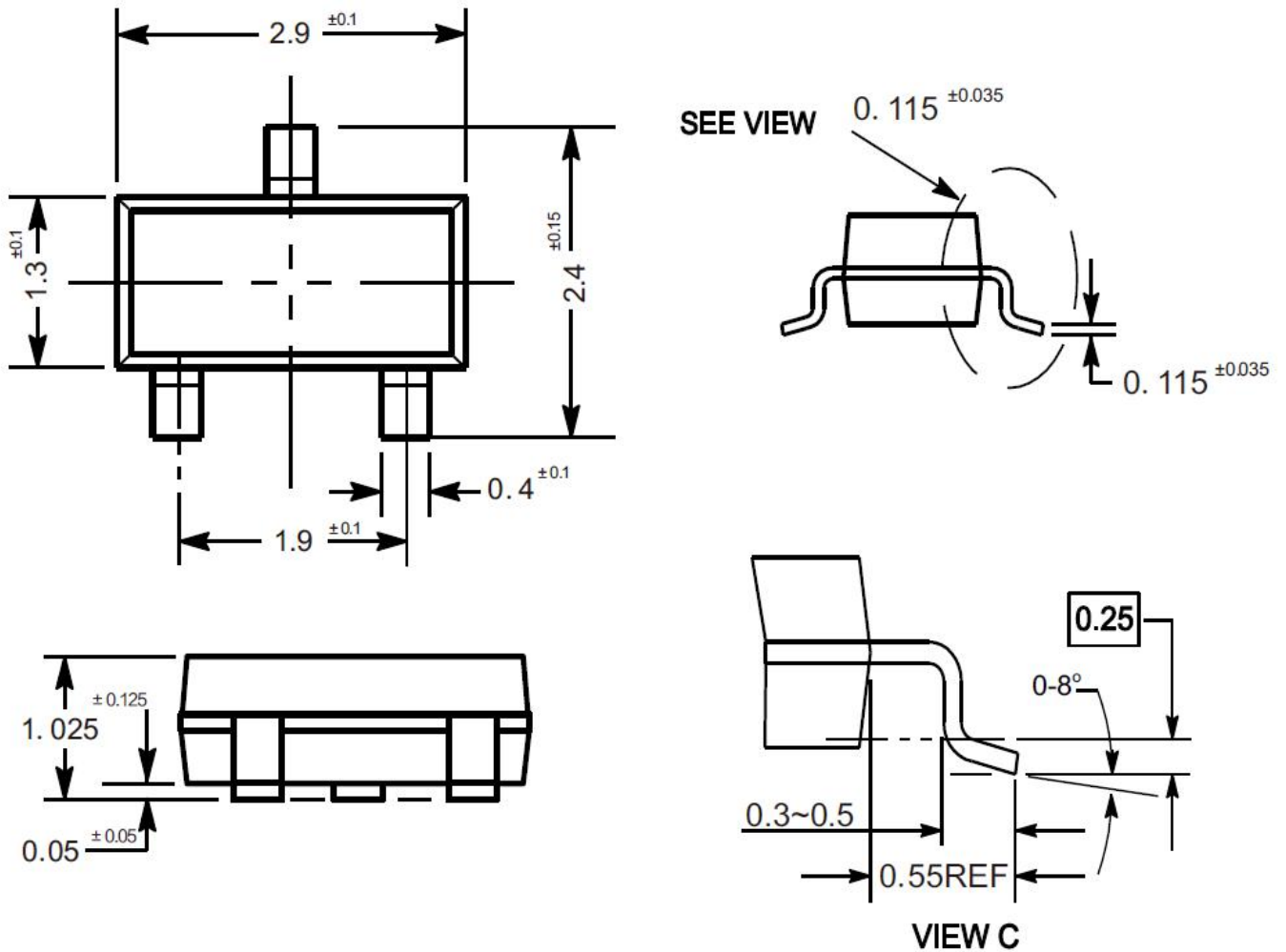


BZX84B Series Silicon Planar Zener Diodes

Package Outline

SOT-23

Dimensions in mm



Ordering Information

Device	Package	Shipping
BZX84B Series	SOT-23	3,000PCS/Reel&7inches