

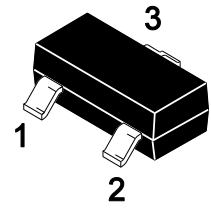


# BZX84C Series Silicon Planar Zener Diodes

## Features

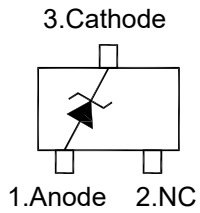
- Total power dissipation: 350mW max
- Package designed for optimal automated board assembly
- Small package size for high density applications
- Wide zener reverse voltage range:2.0V to 75V

## SOT-23



1.Anode 2.NC 3.Cathode

## Equivalent Circuit



## Absolute Maximum Ratings at $T_A = 25\text{ }^\circ\text{C}$

Parameter	Symbols	Value	Unit
Maximum Power Dissipation	$P_D$	350	mW
Thermal Resistance, Junction-to-Ambient <sup>Note1</sup>	$R_{\theta JA}$	357	$^\circ\text{C/W}$
Junction Temperature	$T_J$	150	$^\circ\text{C}$
Storage Temperature Range	$T_{STG}$	-65 to +150	$^\circ\text{C}$

Note: 1. Alumina = 0.4 X 0.3 X 0.024 in,99.5% Alumina



# BZX84C Series

## Silicon Planar Zener Diodes

### Electrical Characteristics at $T_A = 25\text{ }^\circ\text{C}$

( $T_A = 25\text{ }^\circ\text{C}$ , unless otherwise noted,  $V_F < 0.9\text{ V}$  at  $I_F = 10\text{ mA}$ )

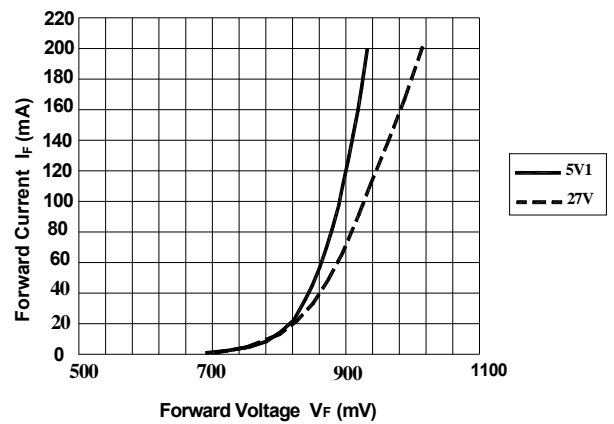
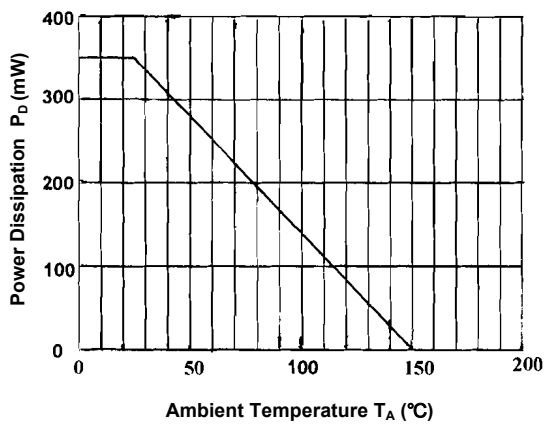
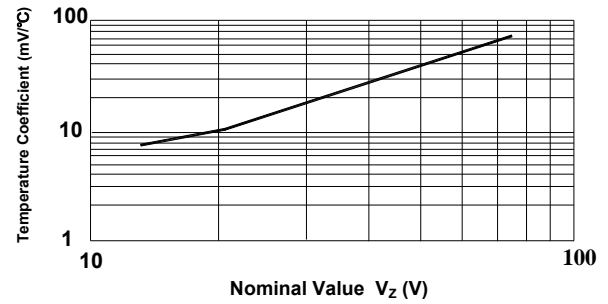
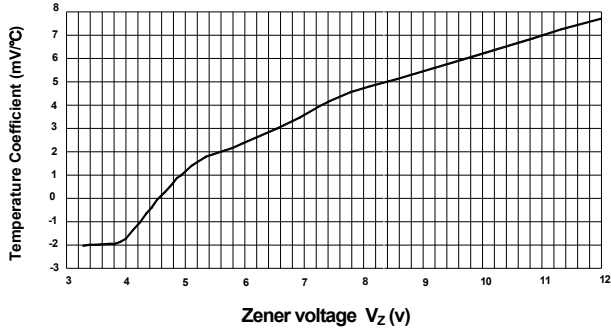
Type	Marking Code	Zener Voltage Range <sup>Note1</sup>			$I_{ZT}$ (mA)	Dynamic Impedance	Reverse Current	
		$V_{ZT}$ at $I_{ZT}$				$Z_{ZT}$ at $I_{ZT}$	$I_R$	at $V_R$
		Min.(V)	Nom.(V)	Max.(V)		Max.( $\Omega$ )	Max.( $\mu\text{A}$ )	(V)
BZX84C2V0	A8	1.8	2	2.15	5	100	120	0.5
BZX84C2V2	B8	2.08	2.2	2.33	5	100	120	0.7
BZX84C2V4	C8	2.2	2.4	2.6	5	100	50	1
BZX84C2V7	D8	2.5	2.7	2.9	5	100	20	1
BZX84C3V0	E8	2.8	3	3.2	5	95	10	1
BZX84C3V3	F8	3.1	3.3	3.5	5	95	5	1
BZX84C3V6	H8	3.4	3.6	3.8	5	90	5	1
BZX84C3V9	Z16	3.7	3.9	4.1	5	90	3	1
BZX84C4V3	K8	4	4.3	4.6	5	90	3	1
BZX84C4V7	M8	4.4	4.7	5	5	80	3	2
BZX84C5V1	N8	4.8	5.1	5.4	5	60	2	2
BZX84C5V6	P8	5.2	5.6	6	5	40	1	2
BZX84C6V2	R8	5.8	6.2	6.6	5	10	3	4
BZX84C6V8	X8	6.4	6.8	7.2	5	15	2	4
BZX84C7V5	Y8	7	7.5	7.9	5	15	1	5
BZX84C8V2	Z8	7.7	8.2	8.7	5	15	0.7	5
BZX84C9V1	A9	8.5	9.1	9.6	5	15	0.5	6
BZX84C10	B9	9.4	10	10.6	5	20	0.2	7
BZX84C11	C9	10.4	11	11.6	5	20	0.1	8
BZX84C12	D9	11.4	12	12.7	5	25	0.1	8
BZX84C13	E9	12.4	13	14.1	5	30	0.1	8
BZX84C15	F9	13.8	15	15.6	5	30	0.05	10.5
BZX84C16	H9	15.3	16	17.1	5	40	0.05	11.2
BZX84C18	J9	16.8	18	19.1	5	45	0.05	12.6
BZX84C20	K9	18.8	20	21.2	5	55	0.05	14
BZX84C22	M9	20.8	22	23.3	5	55	0.05	15.4
BZX84C24	N9	22.8	24	25.6	5	70	0.05	16.8
BZX84C27	P9	25.1	27	28.9	2	80	0.05	18.9
BZX84C30	R9	28	30	32	2	80	0.05	21
BZX84C33	X9	31	33	35	2	80	0.05	23.1
BZX84C36	Y9	34	36	38	2	90	0.05	25.2
BZX84C39	Z9	37	39	41	2	130	0.05	27.3
BZX84C43	A0	40	43	46	2	150	0.05	30.1
BZX84C47	B0	44	47	50	2	170	0.05	32.9
BZX84C51	C0	48	51	54	2	180	0.05	35.7
BZX84C56	D0	52	56	60	2	200	0.05	39.2
BZX84C62	E0	58	62	66	2	215	0.05	43.4
BZX84C68	F0	64	68	72	2	240	0.05	47.6
BZX84C75	H0	70	75	79	2	255	0.05	52.5

Note: 1.  $V_{ZT}$  is tested with 20ms pulse.



# BZX84C Series Silicon Planar Zener Diodes

## Typical Characteristic Curves



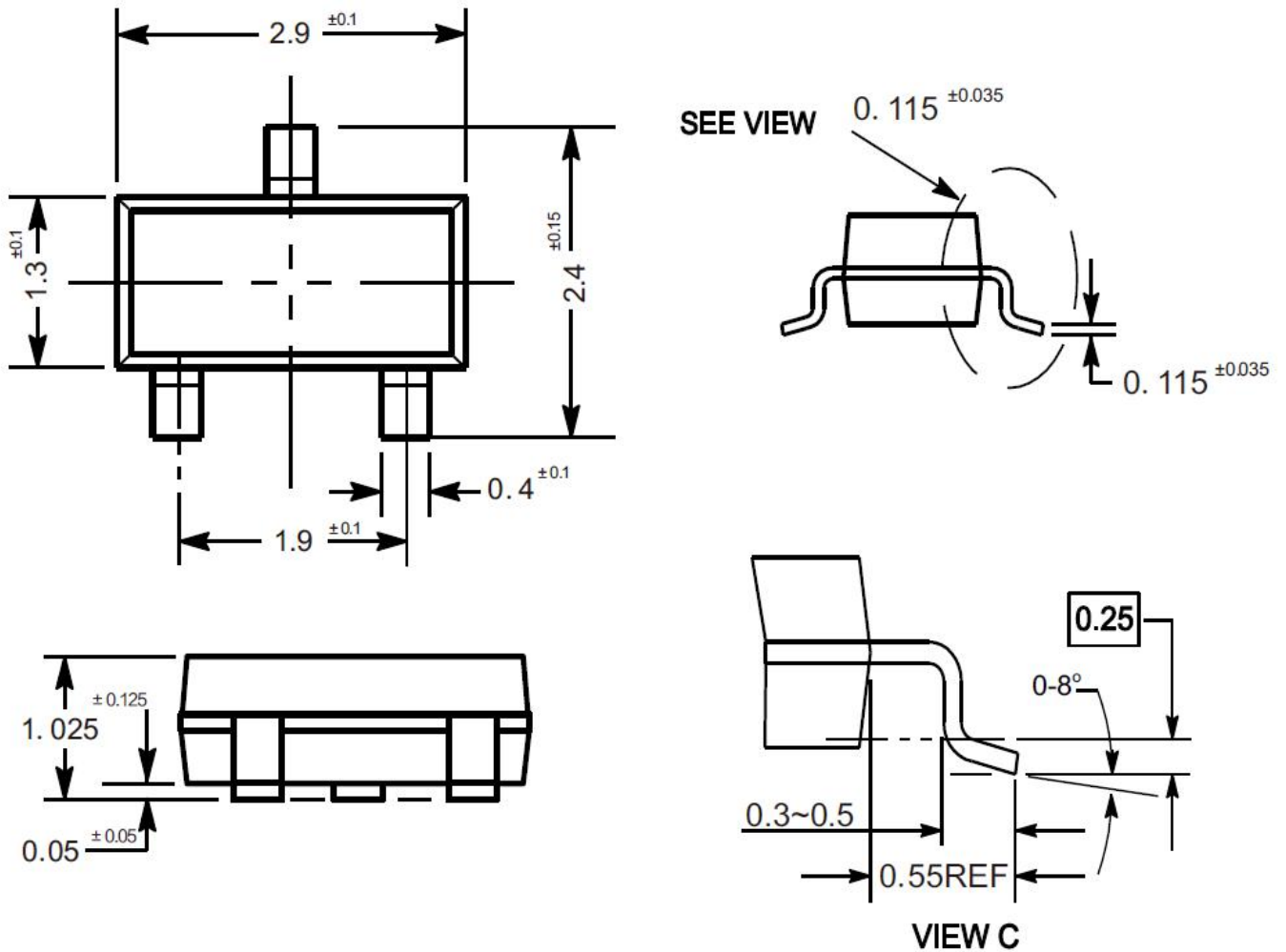


# BZX84C Series Silicon Planar Zener Diodes

## Package Outline

SOT-23

Dimensions in mm



## Ordering Information

Device	Package	Shipping
BZX84C Series	SOT-23	3,000PCS/Reel&7inches