

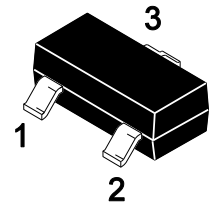


BZX84C...CC Series Silicon Planar Zener Diodes

Features

- Total power dissipation: 350mW max
- Package designed for optimal automated board assembly
- Small package size for high density applications
- Wide zener reverse voltage range:2.0V to 75V

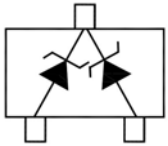
SOT-23



1.Anode1 2.Anode2
3.Cathode1、Cathode2

Equivalent Circuit

3.Cathode1、Cathode2



1.Anode1 2.Anode2

Absolute Maximum Ratings at $T_A = 25\text{ }^\circ\text{C}$

Parameter	Symbols	Value	Unit
Maximum Power Dissipation	P_D	350	mW
Thermal Resistance, Junction-to-Ambient ^{Note1}	$R_{\theta JA}$	357	$^\circ\text{C/W}$
Junction Temperature	T_J	150	$^\circ\text{C}$
Storage Temperature Range	T_{STG}	-65 to +150	$^\circ\text{C}$

Note: 1. Alumina = 0.4 X 0.3 X 0.024 in,99.5% Alumina

Electrical Characteristics at $T_A = 25\text{ }^\circ\text{C}$

Parameter	Symbols	Value	Unit
Forward Voltage at $I_F = 10\text{ mA}$	V_F	0.9	V



BZX84C...CC Series

Silicon Planar Zener Diodes

Electrical Characteristics at $T_A = 25\text{ }^\circ\text{C}$

($T_A=25\text{ }^\circ\text{C}$, unless otherwise noted)

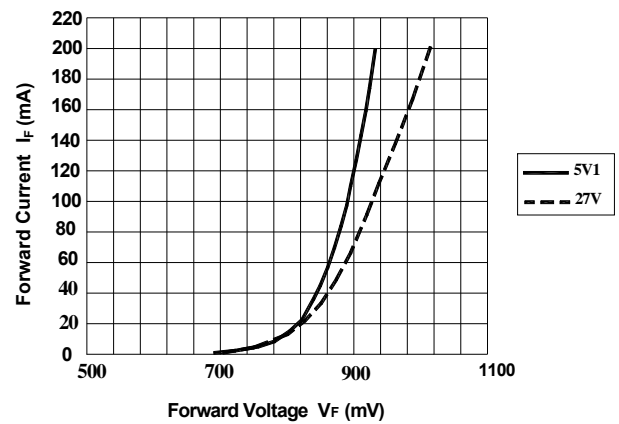
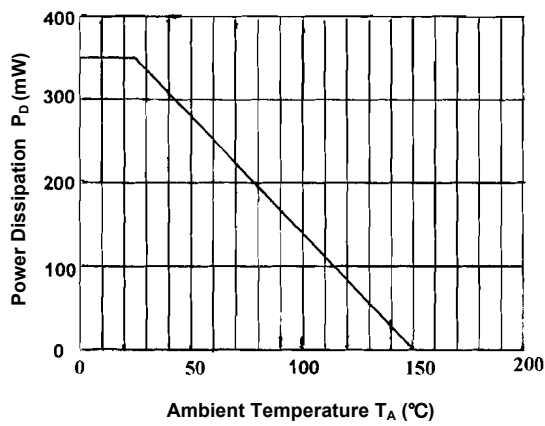
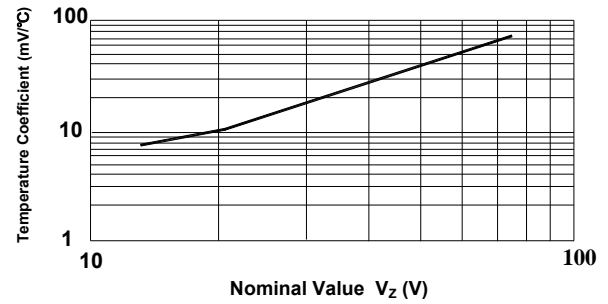
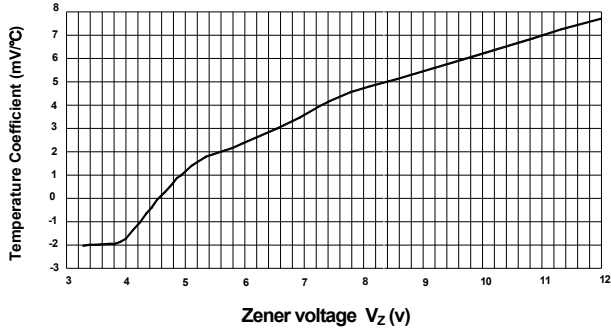
Type	Marking Code	Zener Voltage Range ^{Note1}			I_{ZT} (mA)	Dynamic Impedance		Reverse Current	
		V_{ZT} at I_{ZT}				Z_{ZT} at I_{ZT}	at I_{ZT}	I_R	at V_R
		Min.(V)	Nom.(V)	Max.(V)		Max.(Ω)	(mA)	Max.(μA)	(V)
BZX84C2V4CC	QA	2.2	2.4	2.6	5	100	5	50	1
BZX84C2V7CC	QB	2.5	2.7	2.9	5	100	5	20	1
BZX84C3V0CC	QC	2.8	3.0	3.2	5	95	5	10	1
BZX84C3V3CC	QD	3.1	3.3	3.5	5	95	5	5	1
BZX84C3V6CC	QE	3.4	3.6	3.8	5	90	5	5	1
BZX84C3V9CC	QF	3.7	3.9	4.1	5	90	5	3	1
BZX84C4V3CC	QG	4	4.3	4.6	5	90	5	3	1
BZX84C4V7CC	QH	4.4	4.7	5	5	80	5	3	2
BZX84C5V1CC	QJ	4.8	5.1	5.4	5	60	5	2	2
BZX84C5V6CC	QK	5.2	5.6	6	5	40	5	1	2
BZX84C6V2CC	QL	5.8	6.2	6.6	5	10	5	3	4
BZX84C6V8CC	QM	6.4	6.8	7.2	5	15	5	2	4
BZX84C7V5CC	QN	7	7.5	7.9	5	15	5	1	5
BZX84C8V2CC	QP	7.7	8.2	8.7	5	15	5	0.7	5
BZX84C9V1CC	QQ	8.5	9.1	9.6	5	15	5	0.5	6
BZX84C10CC	QR	9.4	10	10.6	5	20	5	0.2	7
BZX84C11CC	QS	10.4	11	11.6	5	20	5	0.1	8
BZX84C12CC	QT	11.4	12	12.7	5	25	5	0.1	8
BZX84C13CC	QU	12.4	13	14.1	5	30	5	0.1	8
BZX84C15CC	QV	14.3	15	15.8	5	30	5	0.05	10.5
BZX84C16CC	QW	15.3	16	17.1	5	40	5	0.05	11.2
BZX84C18CC	QX	16.8	18	19.1	5	45	5	0.05	12.6
BZX84C20CC	QY	18.8	20	21.2	5	55	5	0.05	14
BZX84C22CC	QZ	20.8	22	23.3	5	55	5	0.05	15.4
BZX84C24CC	SA	22.8	24	25.6	5	70	5	0.05	16.8
BZX84C27CC	SB	25.1	27	28.9	2	80	2	0.05	18.9
BZX84C30CC	SC	28	30	32	2	80	2	0.05	21
BZX84C33CC	SD	31	33	35	2	80	2	0.05	23.1
BZX84C36CC	SE	34	36	38	2	90	2	0.05	25.2
BZX84C39CC	SF	37	39	41	2	130	2	0.05	27.3
BZX84C43CC	SP	40	43	46	2	150	2	0.05	30.1
BZX84C47CC	SH	44	47	50	2	170	2	0.05	32.9
BZX84C51CC	SJ	48	51	54	2	180	2	0.05	35.7
BZX84C56CC	SK	52	56	60	2	200	2	0.05	39.2
BZX84C62CC	SL	58	62	66	2	215	2	0.05	43.4
BZX84C68CC	SM	64	68	72	2	240	2	0.05	47.6
BZX84C75CC	SN	70	75	79	2	255	2	0.05	52.5

Note: 1. V_{ZT} is tested with 20ms pulse.



BZX84C...CC Series Silicon Planar Zener Diodes

Typical Characteristic Curves



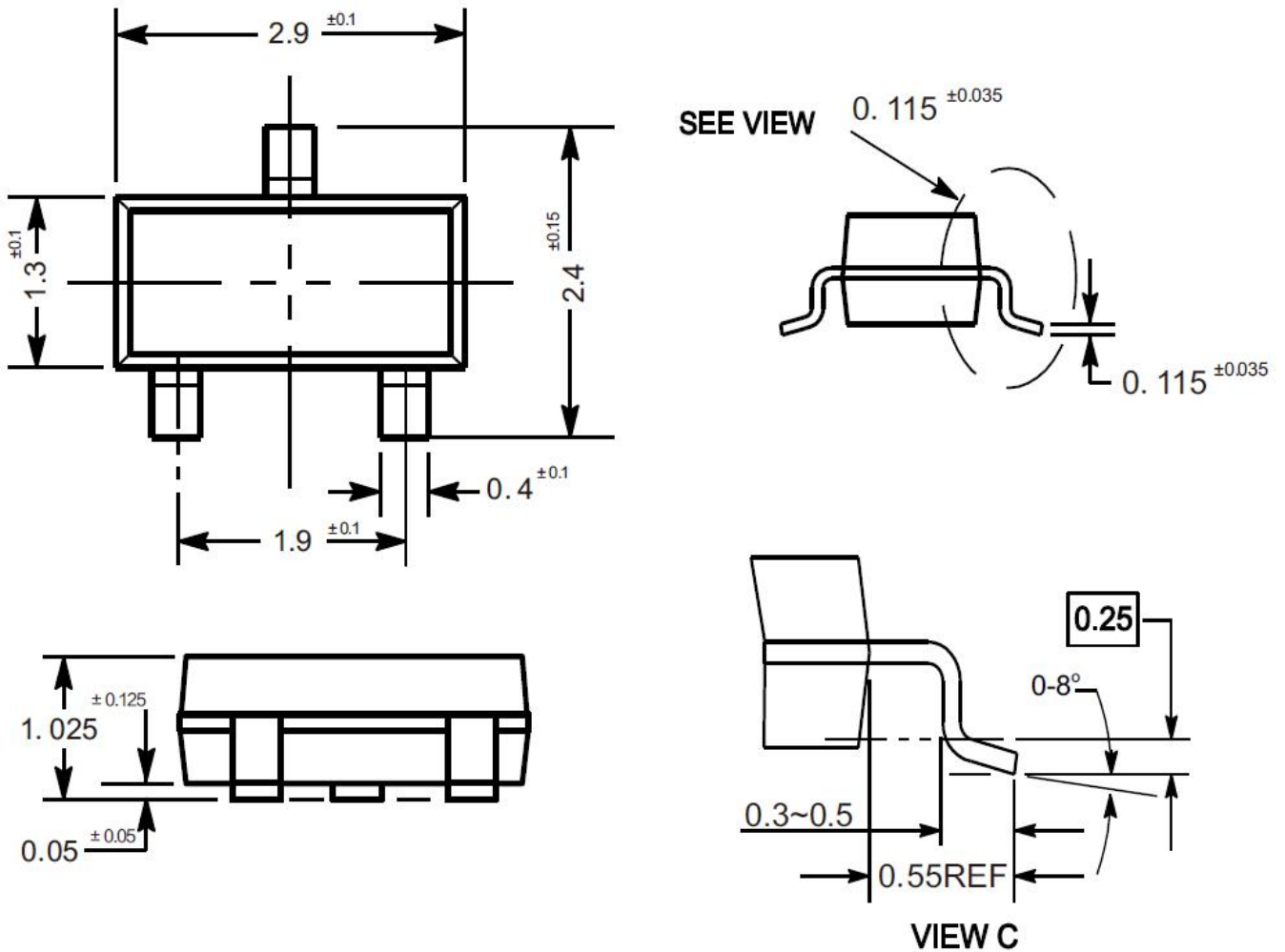


BZX84C...CC Series Silicon Planar Zener Diodes

Package Outline

SOT-23

Dimensions in mm



Ordering Information

Device	Package	Shipping
BZX84C...CC Series	SOT-23	3,000PCS/Reel&7inches