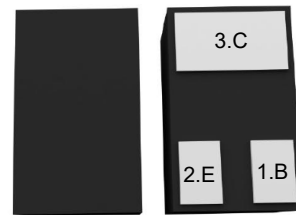


Features

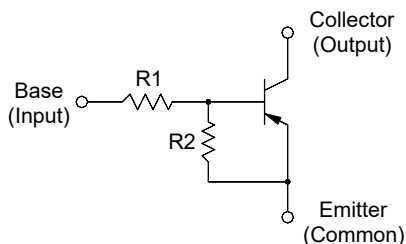
- With built-in bias resistors
- Simplify circuit design
- Reduce a quantity of parts and manufacturing process

DFN1x0.6-3L



1.Base 2.Emmitter 3.Collector

Equivalent Circuit



Resistor Values/Marking Code

| Type | R1 (KΩ) | R2 (KΩ) | Marking Code |
|-----------|---------|---------|--------------|
| DTA114YDC | 10 | 47 | 8G |

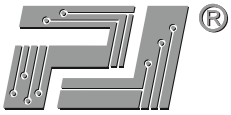
Absolute Maximum Ratings (T_A=25°C)

| Parameter | Symbol | Value | Unit |
|---------------------------|------------------|-------------|------|
| Output Voltage | -V _O | 50 | V |
| Input Voltage | -V _I | 30,-6 | V |
| Output Current | -I _O | 100 | mA |
| Maximum Power Dissipation | P _D | 200 | mW |
| Junction Temperature | T _J | 150 | °C |
| Storage Temperature Range | T _{STG} | -55 to +150 | °C |

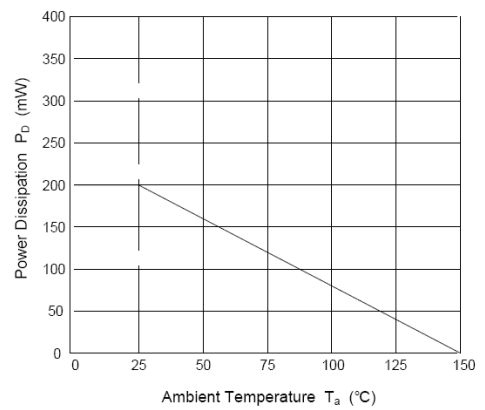
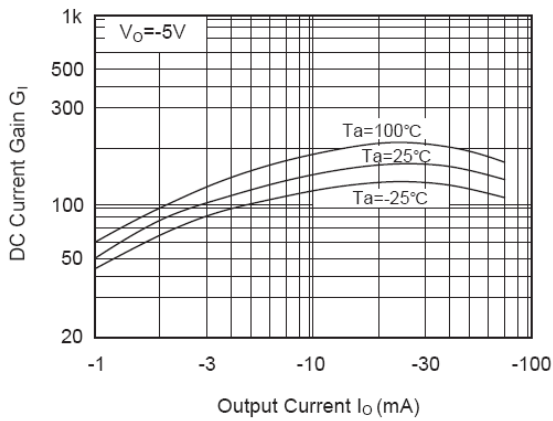
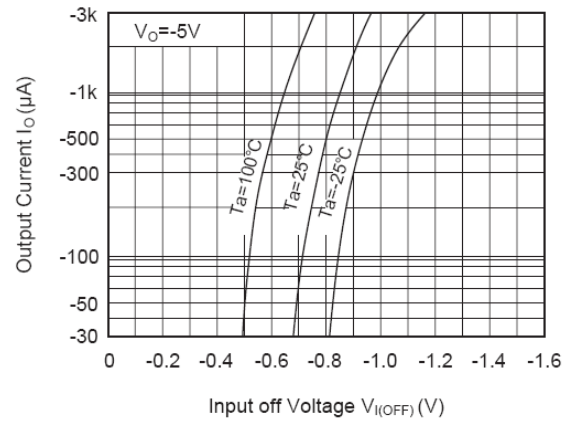
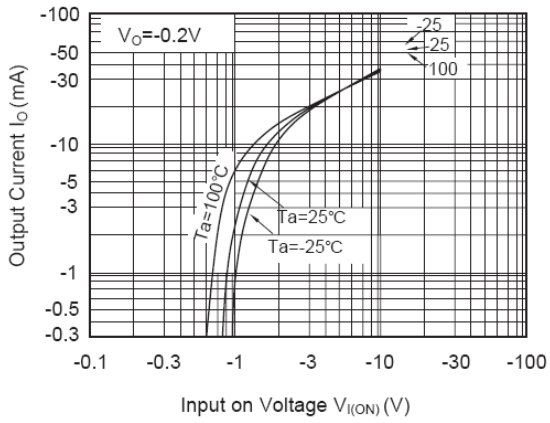


Electrical Characteristics (T_A=25°C)

| Parameter | Symbol | Min. | Typ. | Max. | Unit |
|---|----------------------|------|------|------|------|
| DC Current Gain at V _O = -5 V, I _O = -10 mA | G _I | 80 | -- | -- | -- |
| Output Cutoff Current at V _O = -50 V | -I _{O(OFF)} | -- | -- | 500 | nA |
| Input Current at V _I = -5 V | -I _I | -- | -- | 0.88 | mA |
| Output Voltage (ON) at I _O = -10 mA, I _I = -0.5 mA | -V _{O(ON)} | -- | -- | 0.3 | V |
| Input Voltage (ON) at V _O = -0.2 V, I _O = -5 mA | -V _{I(ON)} | -- | -- | 1.8 | V |
| Input Voltage (OFF) at V _O = -5 V, I _O = -0.1 mA | -V _{I(OFF)} | 0.5 | -- | -- | V |
| Transition Frequency at V _O = -10 V, I _O = -5 mA | f _T | -- | 200 | -- | MHz |



Typical Characteristic Curves

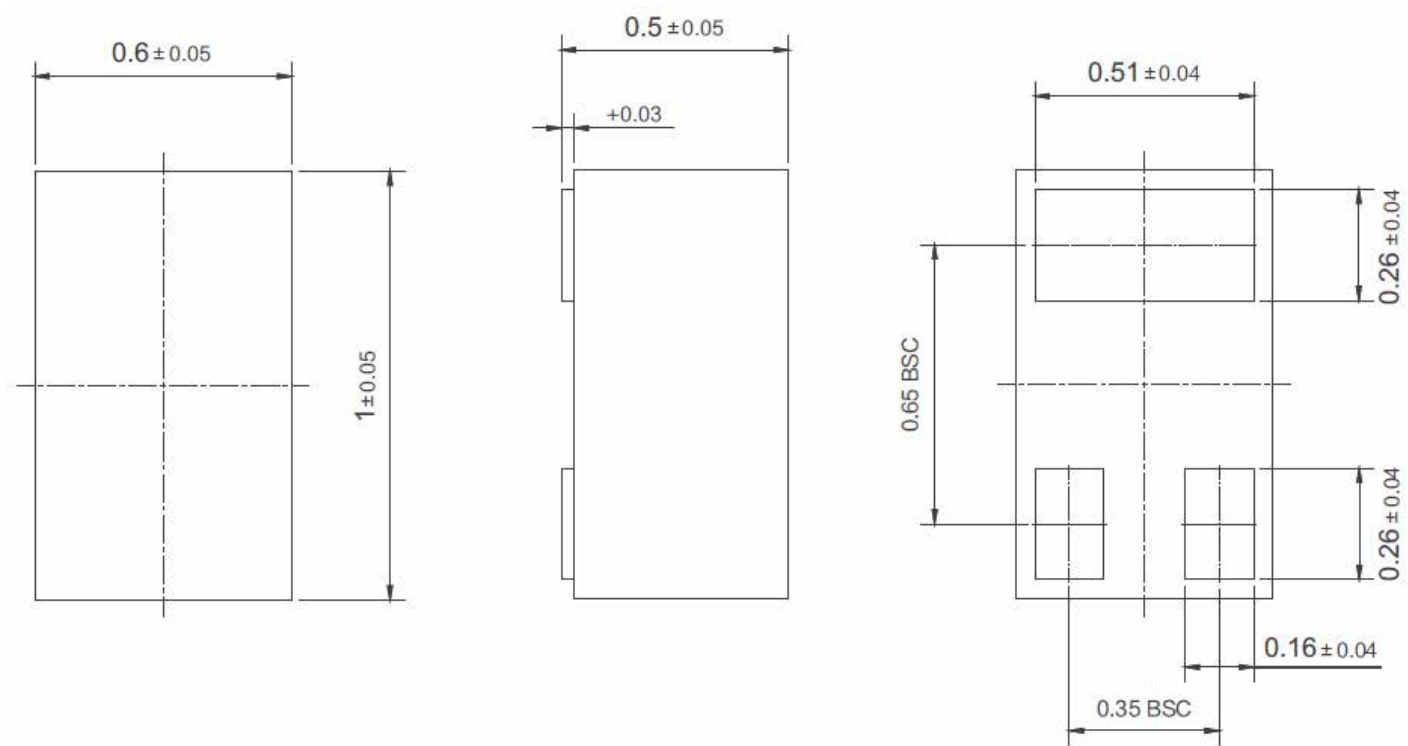




Package Outline

DFN1x0.6-3L-0009

Dimensions in mm



Ordering Information

| Device | Package | Shipping |
|-----------|-------------|-----------------------|
| DTA114YDC | DFN1x0.6-3L | 3,000PCS/Reel&7inches |