



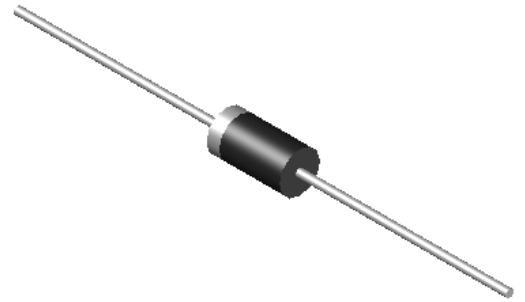
HER301~HER308

Surface Mount Superfast Recovery Rectifiers

Features

- High efficiency
- High current capability
- High Reliability
- High surge current capability
- Solder dip 275 °C max. 7 s, per JESD 22-B106

DO-27



1.Cathode  2.Anode

Marking Code:

HER301: HER301
HER302: HER302
HER303: HER303
HER304: HER304
HER305: HER305
HER306: HER306
HER307: HER307
HER308: HER308

Maximum Ratings and Electrical Characteristics

Ratings at 25°C ambient temperature unless otherwise specified.

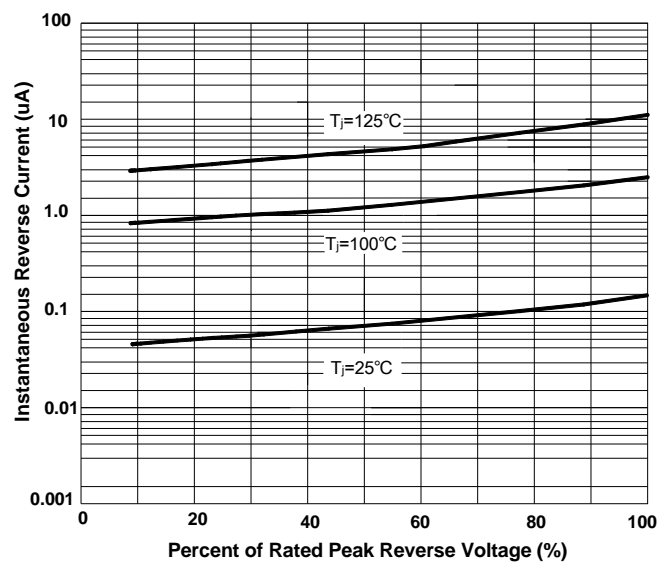
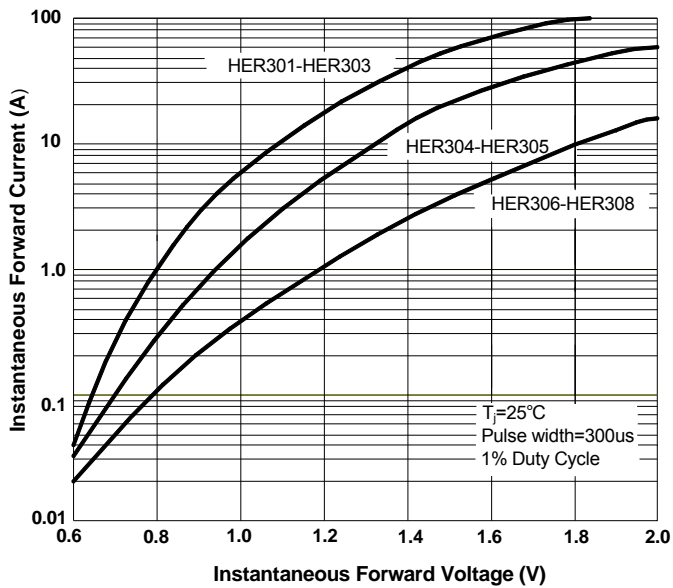
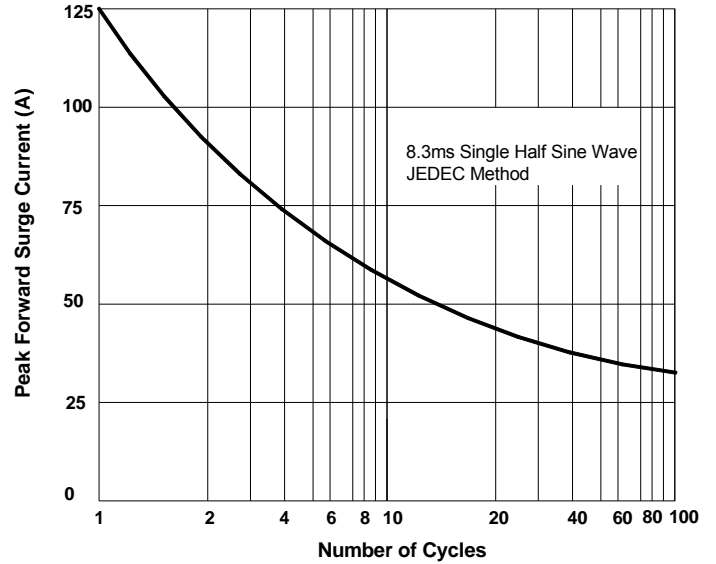
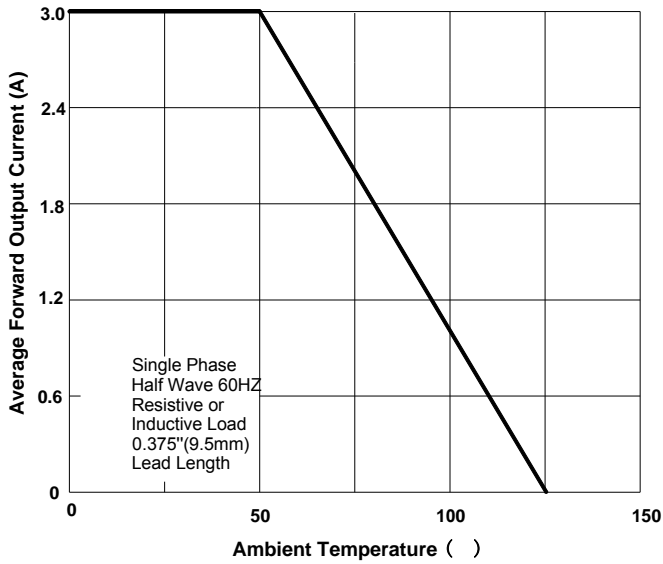
Parameter	Symbols	HER301	HER302	HER303	HER304	HER305	HER306	HER307	HER308	Units	
Maximum Repetitive Peak Reverse Voltage	V_{RRM}	50	100	200	300	400	600	800	1000	V	
Average Forward Current at 60Hz Sine Wave, Resistance load, $T_A=50^\circ\text{C}$	I_O	3								A	
Surge(Non-repetitive)Forward Current at 60Hz Half-Sine Wave, 1 Cycle, $T_A=25^\circ\text{C}$	I_{FSM}	125								A	
Maximum Instantaneous Forward Voltage at 3A	V_{FM}	1.1								V	
Maximum DC Reverse Current at Rated DC Blocking Voltage $T_A = 25^\circ\text{C}$ $T_A = 100^\circ\text{C}$	I_{RRM}	2.5 150								μA	
Typical Junction Capacitance ^{Note1}	C_j	70					50				pF
Typical Thermal Resistance ^{Note2}	$R_{\theta JA}$	20								$^\circ\text{C/W}$	
Maximum Reverse Recovery Time	t_{rr}	50					75				nS
Junction Temperature	T_J	150								$^\circ\text{C}$	
Storage Temperature Range	T_{STG}	-55 to +125								$^\circ\text{C}$	



HER301~HER308

Surface Mount Superfast Recovery Rectifiers

Typical Characteristic Curves





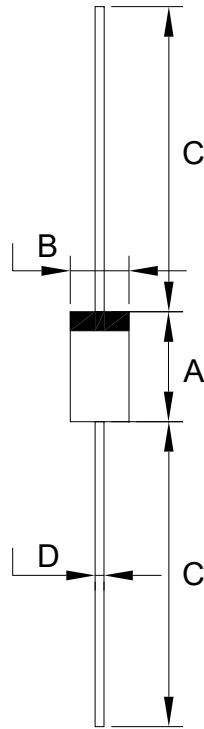
HER301~HER308

Surface Mount Superfast Recovery Rectifiers

Package Outline

DO-27

Dimensions in mm



DO-27		
Dim	Min.	Max.
A	8.50	9.50
B	5.00	5.60
C	25.4	/
D	1.20	1.30