



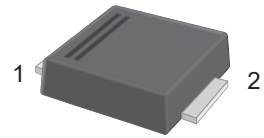
RS1ABF-PJ~RS1MBF-PJ

Surface Mount Fast Recovery Rectifiers

Features

- For surface mount applications
- Glass passivated chip junction
- Fast reverse recovery time

SMBF



1.Cathode  2.Anode

Marking Code:

RS1ABF-PJ: R1AB
 RS1BBF-PJ: R1BB
 RS1DBF-PJ: R1DB
 RS1GBF-PJ: R1GB
 RS1JBF-PJ: R1JB
 RS1KBF-PJ: R1KB
 RS1MBF-PJ: R1MB

Absolute Maximum Ratings and Characteristics

Ratings at 25°C ambient temperature unless otherwise specified. Single phase half-wave 60 Hz, resistive or inductive load, for capacitive load current derate by 20 %.

Parameter	Symbols	RS1ABF -PJ	RS1BBF -PJ	RS1DBF -PJ	RS1GBF -PJ	RS1JBF -PJ	RS1KBF -PJ	RS1MBF -PJ	Units
Maximum Repetitive Peak Reverse Voltage	V_{RRM}	50	100	200	400	600	800	1000	V
Maximum RMS Voltage	V_{RMS}	35	70	140	280	420	560	700	V
Maximum DC Blocking Voltage	V_{DC}	50	100	200	400	600	800	1000	V
Maximum Average Forward Rectified Current at $T_C = 125^\circ\text{C}$	$I_{F(AV)}$	1.0							A
Peak Forward Surge Current 8.3 ms Single Half Sine Wave Superimposed on Rated Load	I_{FSM}	30							A
Maximum Instantaneous Forward Voltage at 1 A	V_F	1.3							V
Maximum DC Reverse Current at Rated DC Blocking Voltage $T_A = 25^\circ\text{C}$ $T_A = 125^\circ\text{C}$	I_R	5 50							μA
Typical Junction Capacitance ^{Note1}	C_j	15							pF
Typical Thermal Resistance ^{Note2}	$R_{\theta JA}$	75							$^\circ\text{C}/\text{W}$
Maximum Reverse Recovery Time ^{Note3}	T_{rr}	150				250	500		nS
Junction Temperature	T_J	150							$^\circ\text{C}$
Storage Temperature Range	T_{STG}	-55 to +150							$^\circ\text{C}$

Note:

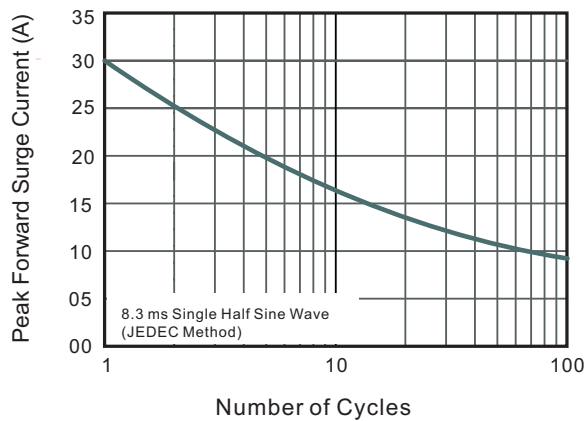
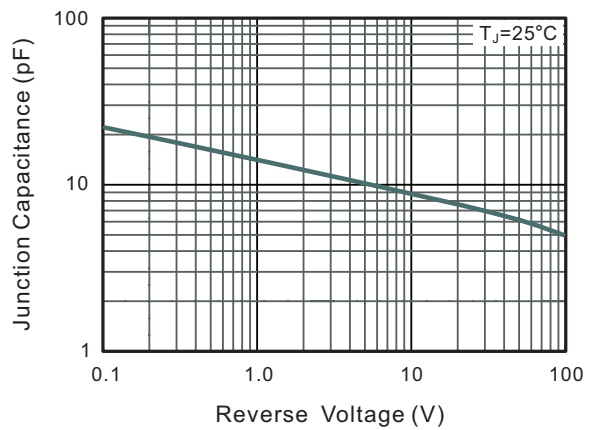
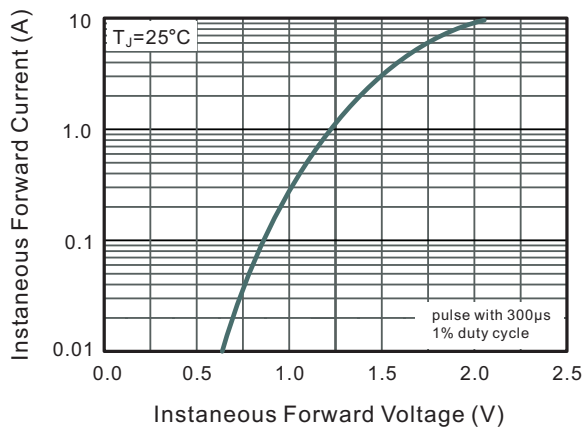
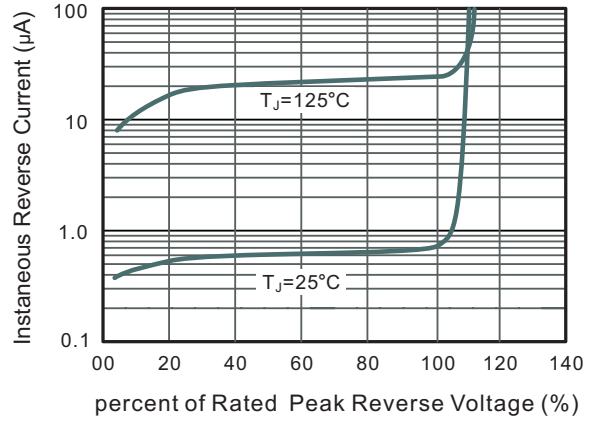
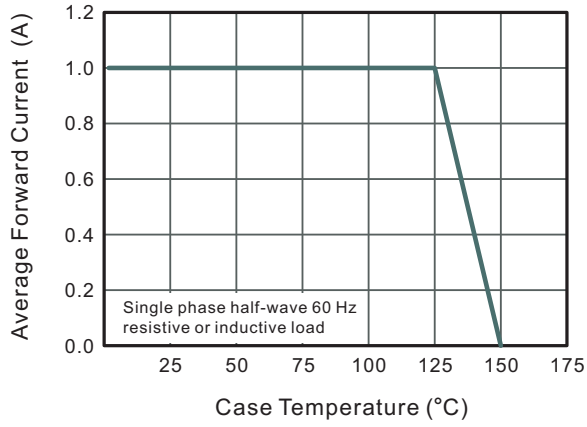
1. Measured at 1 MHz and applied reverse voltage of 4 V D.C
2. P.C.B. mounted with 2.0" X 2.0" (5 X 5 cm) copper pad areas.
3. Measured with $I_F = 0.5\text{ A}$, $I_R = 1\text{ A}$, $I_{rr} = 0.25\text{ A}$



RS1ABF-PJ~RS1MBF-PJ

Surface Mount Fast Recovery Rectifiers

Typical Characteristic Curves





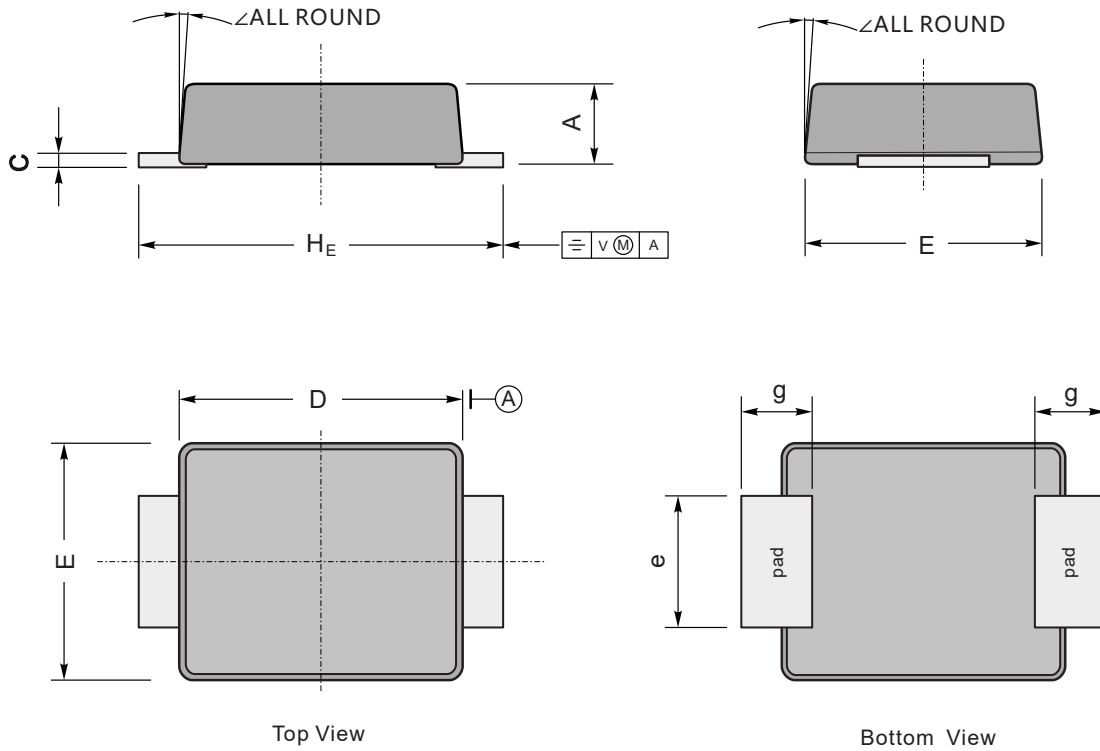
RS1ABF-PJ~RS1MBF-PJ

Surface Mount Fast Recovery Rectifiers

Package Outline

SMBF

Dimensions in mm



UNIT		A	C	D	E	H _E	e	g	∠
mm	max	1.3	0.26	4.4	3.7	5.5	2.2	1.0	9°
	min	1.1	0.18	4.2	3.5	5.1	1.9		
mil	max	51	10	173	146	216	86	40	
	min	43	7	165	138	200	75		