



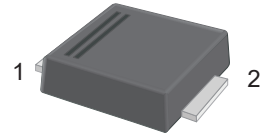
RS2ABF-PJ~RS2MBF-PJ

Surface Mount Fast Recovery Rectifiers

Features

- For surface mount applications
- Glass passivated chip junction
- Fast reverse recovery time

SMBF



1.Cathode  2.Anode

Marking Code:

RS2ABF-PJ: R2AB
 RS2BBF-PJ: R2BB
 RS2DBF-PJ: R2DB
 RS2GBF-PJ: R2GB
 RS2JBF-PJ: R2JB
 RS2KBF-PJ: R2KB
 RS2MBF-PJ: R2MB

Absolute Maximum Ratings and Characteristics

Ratings at 25°C ambient temperature unless otherwise specified. Single phase half-wave 60 Hz, resistive or inductive load, for capacitive load current derate by 20 %.

Parameter	Symbols	RS2ABF -PJ	RS2BBF -PJ	RS2DBF -PJ	RS2GBF -PJ	RS2JBF -PJ	RS2KBF -PJ	RS2MBF -PJ	Units
Maximum Repetitive Peak Reverse Voltage	V_{RRM}	50	100	200	400	600	800	1000	V
Maximum RMS Voltage	V_{RMS}	35	70	140	280	420	560	700	V
Maximum DC Blocking Voltage	V_{DC}	50	100	200	400	600	800	1000	V
Maximum Average Forward Rectified Current at $T_C = 125^\circ\text{C}$	$I_{F(AV)}$	2.0							A
Peak Forward Surge Current 8.3 ms Single Half Sine Wave Superimposed on Rated Load	I_{FSM}	50							A
Maximum Instantaneous Forward Voltage at 2 A	V_F	1.3							V
Maximum DC Reverse Current at Rated DC Blocking Voltage $T_A = 25^\circ\text{C}$ $T_A = 125^\circ\text{C}$	I_R	5 100							μA
Typical Junction Capacitance ^{Note1}	C_j	28							pF
Typical Thermal Resistance ^{Note2}	$R_{\theta JA}$ $R_{\theta JC}$	60 18							$^\circ\text{C/W}$
Maximum Reverse Recovery Time ^{Note3}	T_{rr}	150				250	500		nS
Junction Temperature	T_J	150							$^\circ\text{C}$
Storage Temperature Range	T_{STG}	-55 to +150							$^\circ\text{C}$

Note:

1. Measured at 1 MHz and applied reverse voltage of 4 V D.C
2. P.C.B. mounted with 2.0" X 2.0" (5 X 5 cm) copper pad areas.
3. Measured with $I_F = 0.5\text{ A}$, $I_R = 1\text{ A}$, $I_{rr} = 0.25\text{ A}$



RS2ABF-PJ~RS2MBF-PJ

Surface Mount Fast Recovery Rectifiers

Typical Characteristic Curves

