



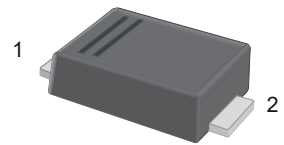
# RS2AF-PJ~RS2MF-PJ

## Surface Mount Fast Recovery Rectifiers

### Features

- For surface mount applications
- Glass passivated chip junction
- Fast reverse recovery time

SMAF



1.Cathode  2.Anode

### Marking Code:

RS2AF-PJ: RS2A  
 RS2BF-PJ: RS2B  
 RS2DF-PJ: RS2D  
 RS2GF-PJ: RS2G  
 RS2JF-PJ: RS2J  
 RS2KF-PJ: RS2K  
 RS2MF-PJ: RS2M

### Maximum Ratings and Electrical Characteristics

Ratings at 25°C ambient temperature unless otherwise specified. Single phase half-wave 60 Hz, resistive or inductive load, for capacitive load current derate by 20 %.

Parameter	Symbols	RS2AF-PJ	RS2BF-PJ	RS2DF-PJ	RS2GF-PJ	RS2JF-PJ	RS2KF-PJ	RS2MF-PJ	Units
Maximum Repetitive Peak Reverse Voltage	$V_{RRM}$	50	100	200	400	600	800	1000	V
Maximum RMS Voltage	$V_{RMS}$	35	70	140	280	420	560	700	V
Maximum DC Blocking Voltage	$V_{DC}$	50	100	200	400	600	800	1000	V
Maximum Average Forward Rectified Current at $T_C = 125^\circ\text{C}$	$I_{F(AV)}$	2.0							A
Peak Forward Surge Current 8.3 ms Single Half Sine Wave Superimposed on Rated Load	$I_{FSM}$	50							A
Maximum Instantaneous Forward Voltage at 2 A	$V_F$	1.3							V
Maximum DC Reverse Current at Rated DC Blocking Voltage $T_A = 25^\circ\text{C}$ $T_A = 125^\circ\text{C}$	$I_R$	5 100							$\mu\text{A}$
Typical Junction Capacitance <sup>Note1</sup>	$C_j$	22							pF
Typical Thermal Resistance <sup>Note2</sup>	$R_{\theta JA}$ $R_{\theta JC}$	65 20							$^\circ\text{C/W}$
Maximum Reverse Recovery Time <sup>Note3</sup>	$T_{rr}$	150				250	500		nS
Junction Temperature	$T_J$	150							$^\circ\text{C}$
Storage Temperature Range	$T_{STG}$	-55 to +150							$^\circ\text{C}$

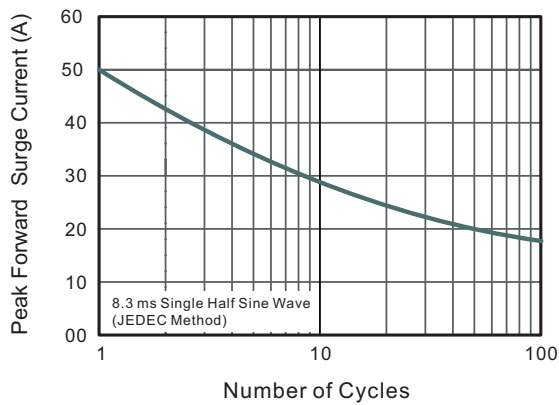
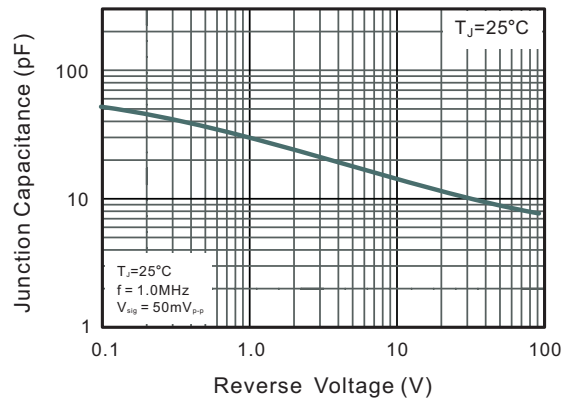
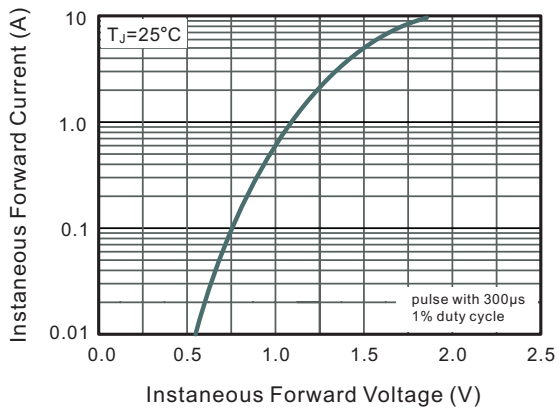
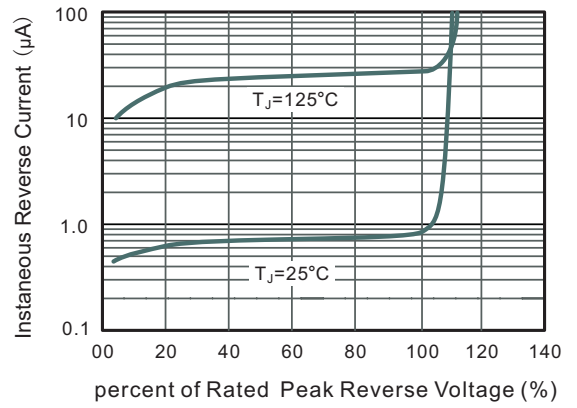
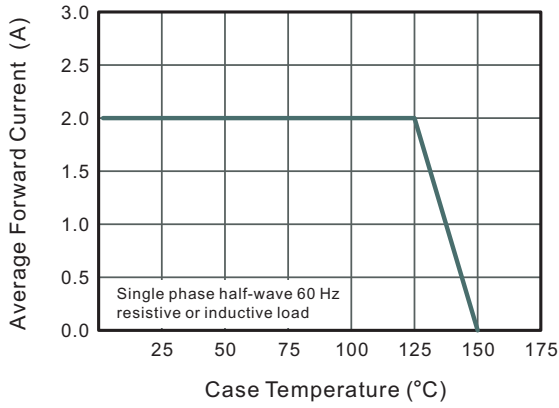
### Note:

1. Measured at 1 MHz and applied reverse voltage of 4 V D.C
2. P.C.B. mounted with 2.0" X 2.0" (5 X 5 cm) copper pad areas.
3. Measured with  $I_F = 0.5\text{ A}$ ,  $I_R = 1\text{ A}$ ,  $I_{rr} = 0.25\text{ A}$



# RS2AF-PJ~RS2MF-PJ Surface Mount Fast Recovery Rectifiers

## Typical Characteristic Curves





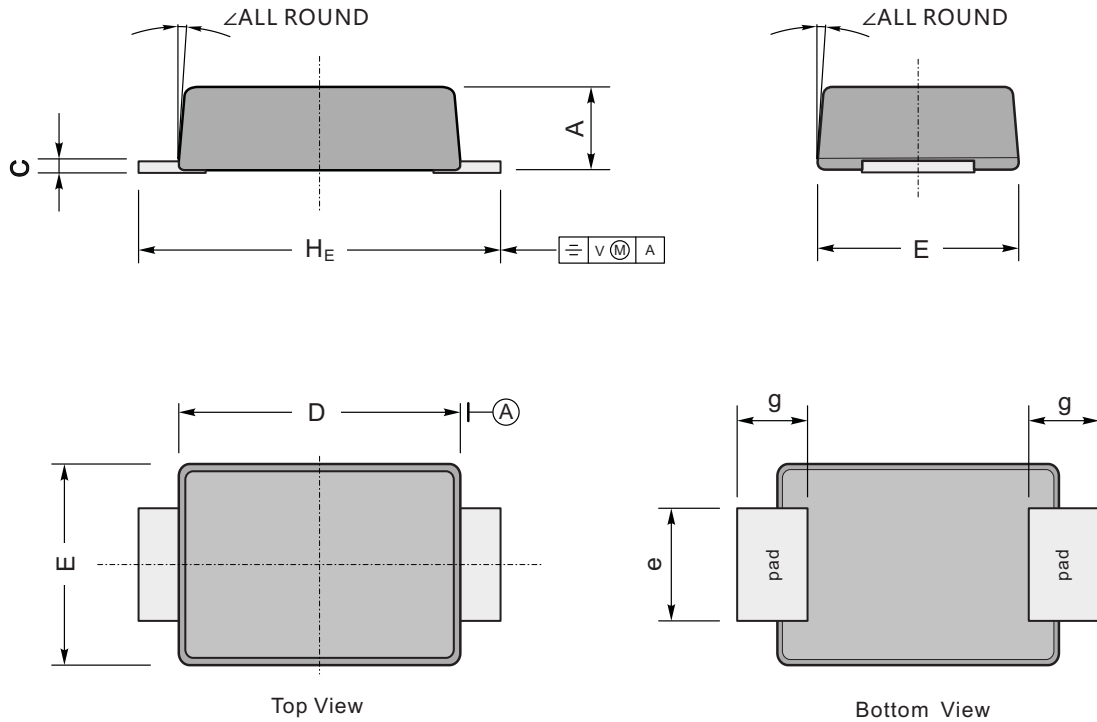
# RS2AF-PJ~RS2MF-PJ

## Surface Mount Fast Recovery Rectifiers

### Package Outline

SMAF

Dimensions in mm



UNIT		A	C	D	E	e	g	$H_E$	$\angle$
mm	max	1.2	0.20	3.7	2.7	1.6	1.2	4.9	7°
	min	0.9	0.12	3.3	2.4	1.3	0.8	4.4	
mil	max	47	7.9	146	106	63	47	193	
	min	35	4.7	130	94	51	31	173	