



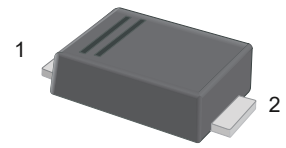
RS3AF-PJ~RS3MF-PJ

Surface Mount Fast Recovery Rectifiers

Features

- For surface mount applications
- Glass passivated chip junction
- Fast reverse recovery time

SMAF



1.Cathode  2.Anode

Marking Code:

RS3AF-PJ: RS3A
 RS3BF-PJ: RS3B
 RS3DF-PJ: RS3D
 RS3GF-PJ: RS3G
 RS3JF-PJ: RS3J
 RS3KF-PJ: RS3K
 RS3MF-PJ: RS3M

Maximum Ratings and Electrical Characteristics

Ratings at 25°C ambient temperature unless otherwise specified. Single phase half-wave 60 Hz, resistive or inductive load, for capacitive load current derate by 20 %.

Parameter	Symbols	RS3AF-PJ	RS3BF-PJ	RS3DF-PJ	RS3GF-PJ	RS3JF-PJ	RS3KF-PJ	RS3MF-PJ	Units
Maximum Repetitive Peak Reverse Voltage	V_{RRM}	50	100	200	400	600	800	1000	V
Maximum RMS Voltage	V_{RMS}	35	70	140	280	420	560	700	V
Maximum DC Blocking Voltage	V_{DC}	50	100	200	400	600	800	1000	V
Maximum Average Forward Rectified Current at $T_C = 125^\circ\text{C}$	$I_{F(AV)}$	3.0							A
Peak Forward Surge Current 8.3 ms Single Half Sine Wave Superimposed on Rated Load	I_{FSM}	80							A
Maximum Instantaneous Forward Voltage at 3 A	V_F	1.3							V
Maximum DC Reverse Current at Rated DC Blocking Voltage $T_A = 25^\circ\text{C}$ $T_A = 125^\circ\text{C}$	I_R	5 100							μA
Typical Junction Capacitance ^{Note1}	C_j	32							pF
Typical Thermal Resistance ^{Note2}	$R_{\theta JA}$ $R_{\theta JC}$	50 16							$^\circ\text{C/W}$
Maximum Reverse Recovery Time ^{Note3}	T_{rr}	150				250	500		nS
Junction Temperature	T_J	150							$^\circ\text{C}$
Storage Temperature Range	T_{STG}	-55 to +150							$^\circ\text{C}$

Note:

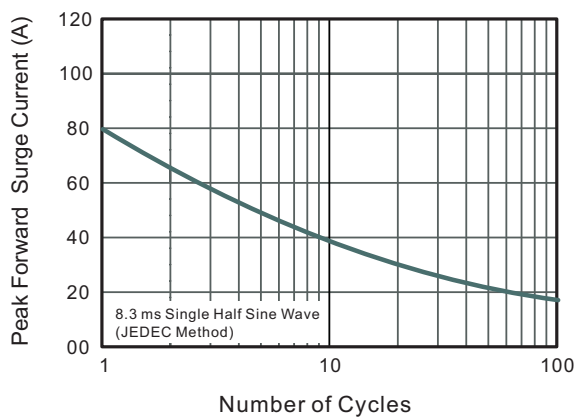
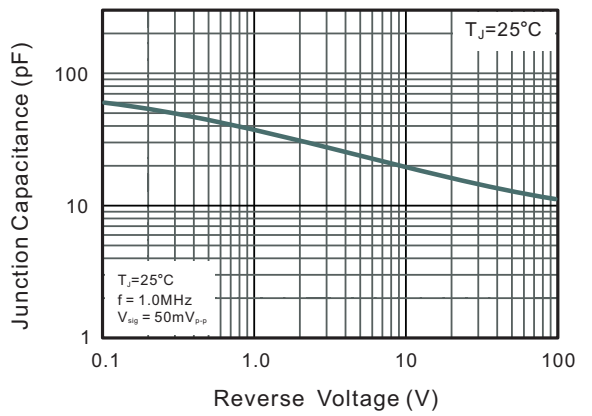
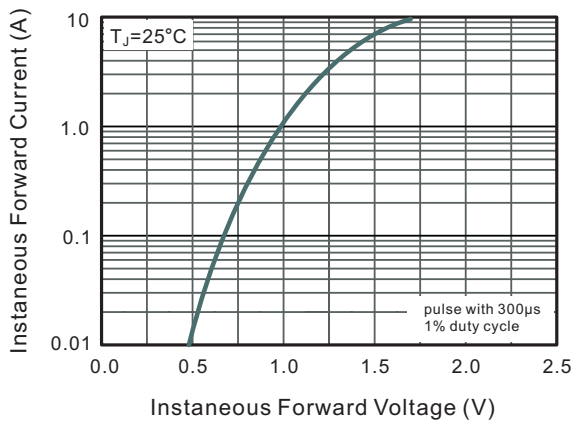
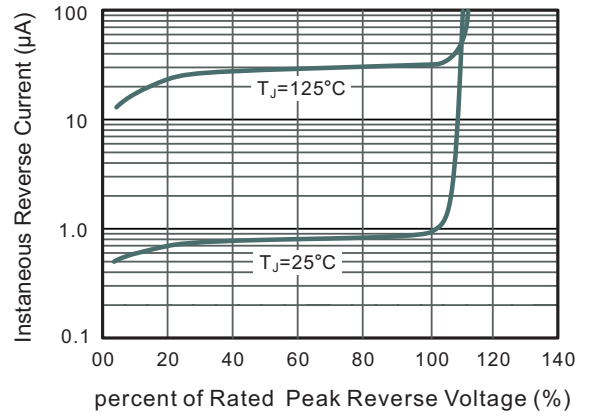
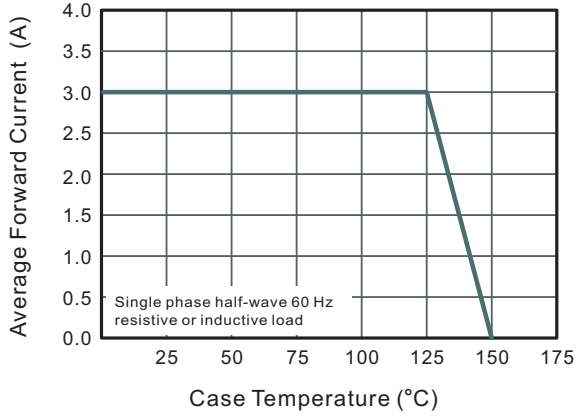
1. Measured at 1 MHz and applied reverse voltage of 4 V D.C
2. P.C.B. mounted with 2.0" X 2.0" (5 X 5 cm) copper pad areas.
3. Measured with $I_F = 0.5\text{ A}$, $I_R = 1\text{ A}$, $I_{rr} = 0.25\text{ A}$



RS3AF-PJ~RS3MF-PJ

Surface Mount Fast Recovery Rectifiers

Typical Characteristic Curves





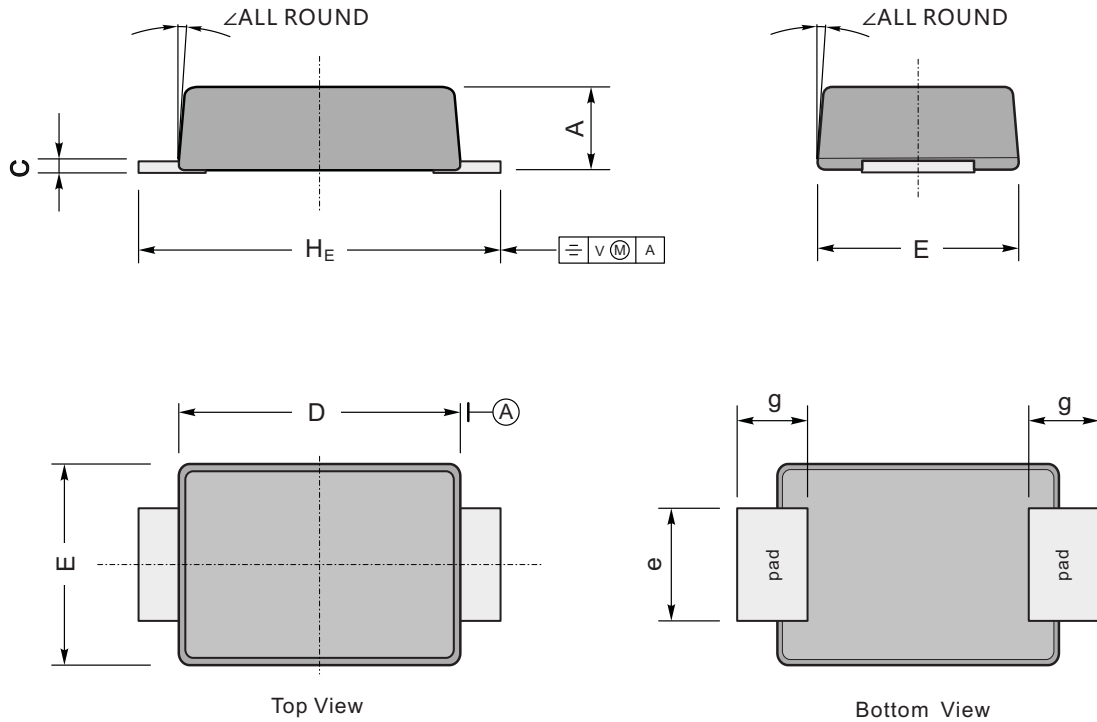
RS3AF-PJ~RS3MF-PJ

Surface Mount Fast Recovery Rectifiers

Package Outline

SMAF

Dimensions in mm



UNIT		A	C	D	E	e	g	H_E	\angle
mm	max	1.2	0.20	3.7	2.7	1.6	1.2	4.9	7°
	min	0.9	0.12	3.3	2.4	1.3	0.8	4.4	
mil	max	47	7.9	146	106	63	47	193	
	min	35	4.7	130	94	51	31	173	