



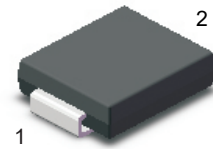
# S4AC-PJ ~S4MC-PJ

## Surface Mount General Purpose Silicon Rectifiers

### Features

- For surface mount applications
- Glass Passivated Chip Junction
- Low profile package
- Easy to pick and place

SMC



1.Cathode  2.Anode

### Marking Code:

S4AC-PJ: S4A  
S4BC-PJ: S4B  
S4DC-PJ: S4D  
S4GC-PJ: S4G  
S4JC-PJ: S4J  
S4KC-PJ: S4K  
S4MC-PJ: S4M

### Maximum Ratings and Electrical Characteristics

Ratings at 25°C ambient temperature unless otherwise specified. Single phase half-wave 60 Hz, resistive or inductive load, for capacitive load current derate by 20 %.

Parameter	Symbols	S4AC-PJ	S4BC-PJ	S4DC-PJ	S4GC-PJ	S4JC-PJ	S4KC-PJ	S4MC-PJ	Units
Maximum Repetitive Peak Reverse Voltage	$V_{RRM}$	50	100	200	400	600	800	1000	V
Maximum RMS Voltage	$V_{RMS}$	35	70	140	280	420	560	700	V
Maximum DC Blocking Voltage	$V_{DC}$	50	100	200	400	600	800	1000	V
Maximum Average Forward Rectified Current	$I_{F(AV)}$	4.0							A
Peak Forward Surge Current 8.3 ms Single Half Sine Wave Superimposed on Rated Load	$I_{FSM}$	120							A
Maximum Instantaneous Forward Voltage at 4 A	$V_F$	1.0							V
Maximum DC Reverse Current at Rated DC Blocking Voltage $T_A = 25\text{ }^\circ\text{C}$ $T_A = 125\text{ }^\circ\text{C}$	$I_R$	5 100							$\mu\text{A}$
Typical Junction Capacitance <sup>Note1</sup>	$C_j$	50							pF
Typical Thermal Resistance <sup>Note2</sup>	$R_{\theta JA}$ $R_{\theta JC}$	35 13							$^\circ\text{C/W}$
Junction Temperature	$T_J$	150							$^\circ\text{C}$
Storage Temperature Range	$T_{STG}$	-55 to +150							$^\circ\text{C}$

### Note:

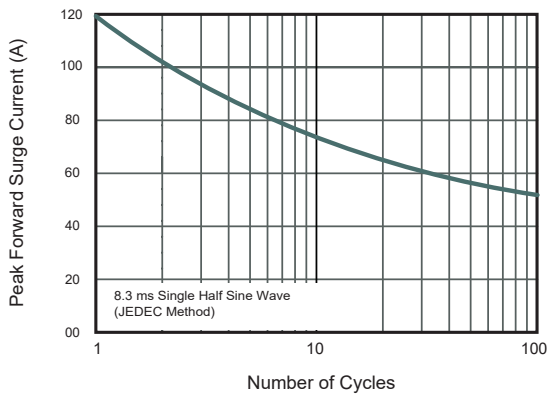
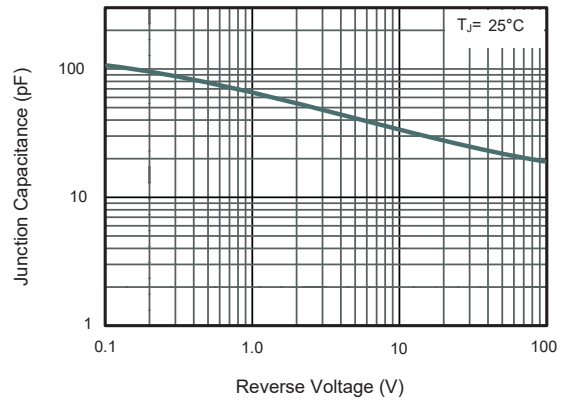
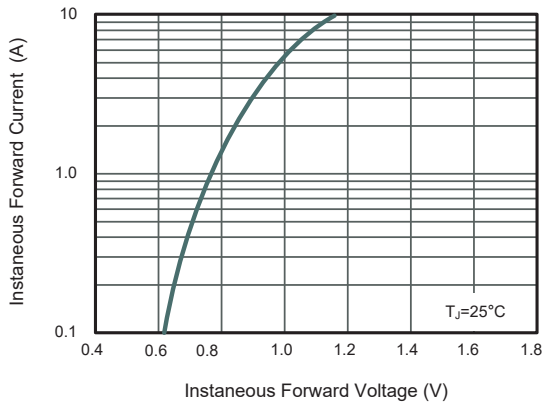
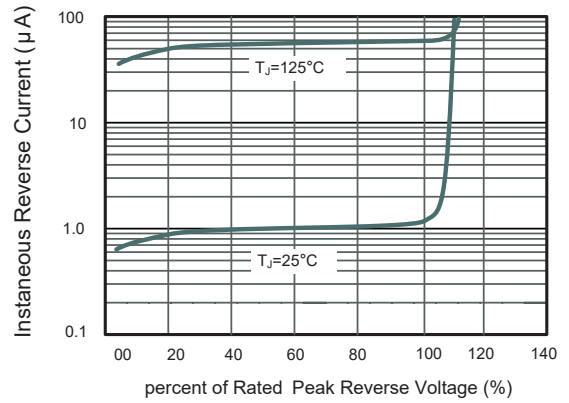
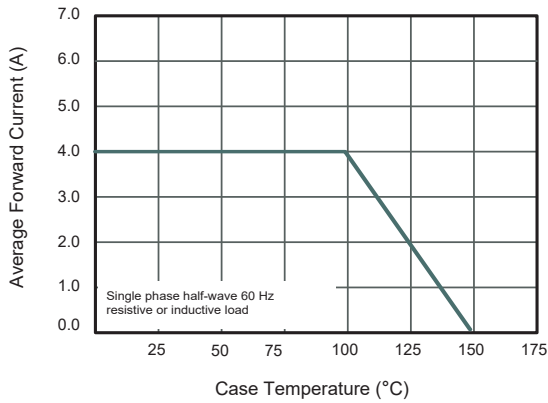
1. Measured at 1 MHz and applied reverse voltage of 4 V D.C
2. P.C.B. mounted with 2.0" X 2.0" (5 X 5 cm) copper pad areas.



# S4AC-PJ ~S4MC-PJ

## Surface Mount General Purpose Silicon Rectifiers

### Typical Characteristic Curves





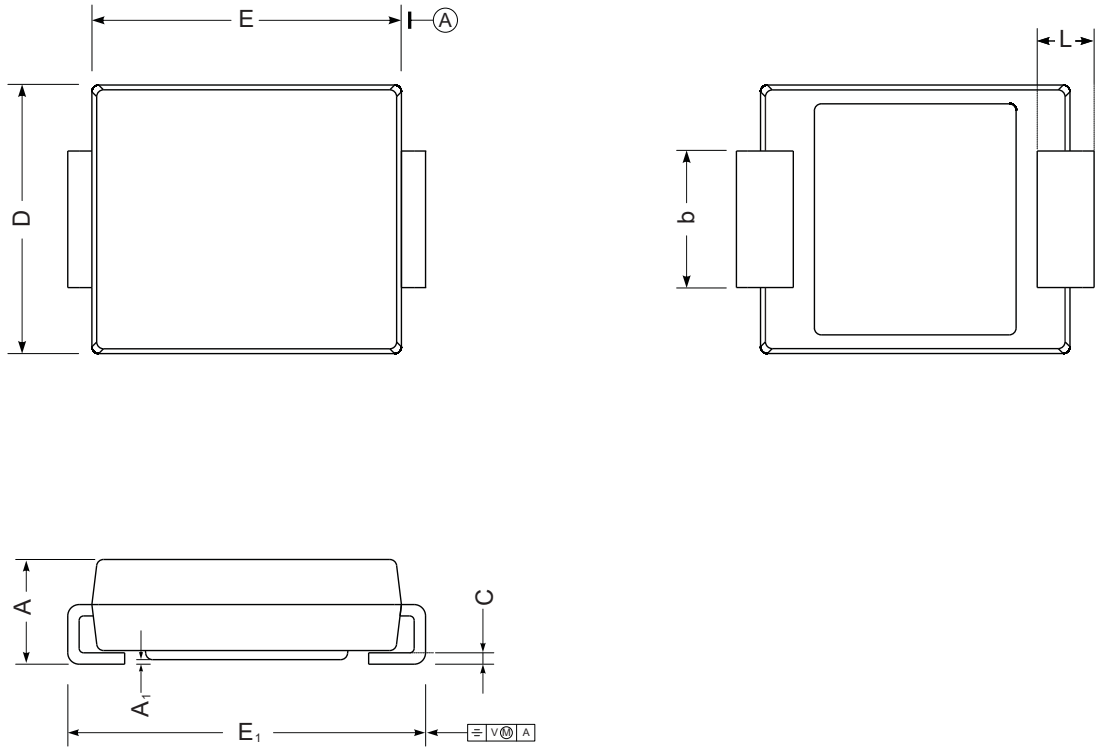
# S4AC-PJ ~S4MC-PJ

## Surface Mount General Purpose Silicon Rectifiers

### Package Outline

SMC

Dimensions in mm



UNIT		A	E	D	E <sub>1</sub>	A <sub>1</sub>	C	L	b
mm	max	2.62	7.0	6.2	8.0	0.21	0.31	1.6	3.25
	min	2.00	6.5	5.6	7.6	0.05	0.15	0.9	2.75
mil	max	103	276	244	315	8.3	12	63	128
	min	79	256	220	299	2.0	5.9	35	108