

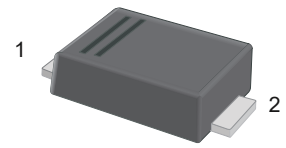


SS32F-PJ~SS320F-PJ Schottky Barrier Diode

Features

- Low power loss, high efficiency
- For surface mounted applications
- High forward surge current capability

SMAF



1.Cathode  2.Anode

Marking Code:

SS32F-PJ : SS32
 SS34F-PJ : SS34
 SS345F-PJ : SS345
 SS36F-PJ : SS36
 SS38F-PJ : SS38
 SS310F-PJ : SS310
 SS312F-PJ : SS312
 SS315F-PJ : SS315
 SS320F-PJ : SS320

Maximum Ratings and Electrical Characteristics

Ratings at 25°C ambient temperature unless otherwise specified. Single phase half-wave 60 Hz, resistive or inductive load, for capacitive load current derate by 20 %.

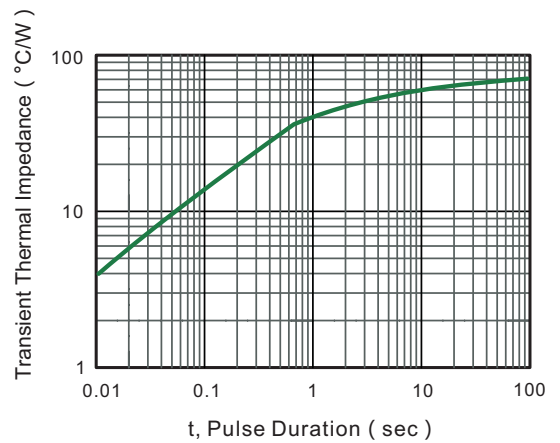
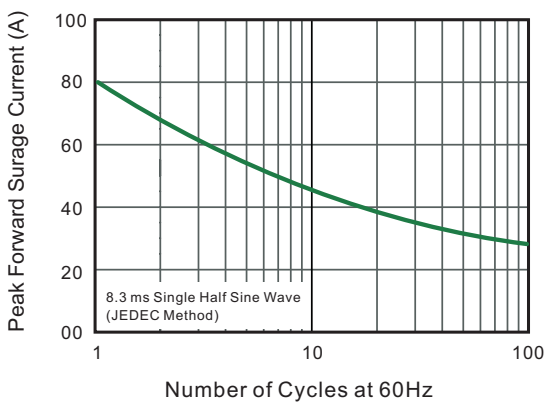
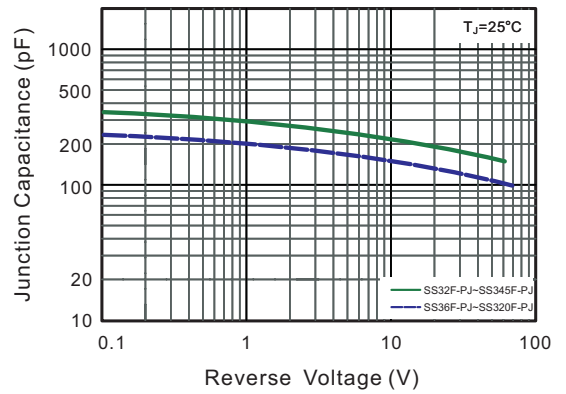
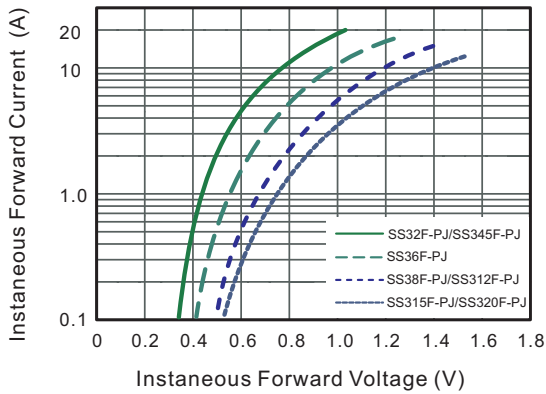
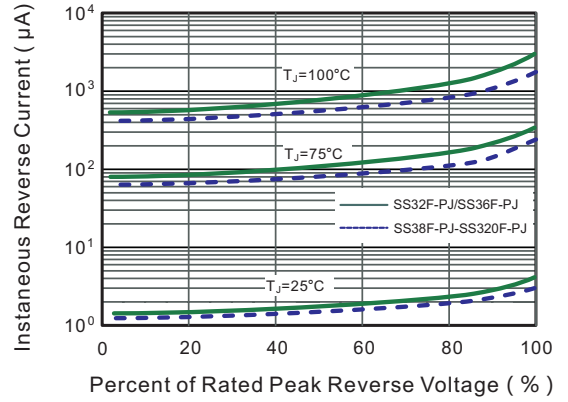
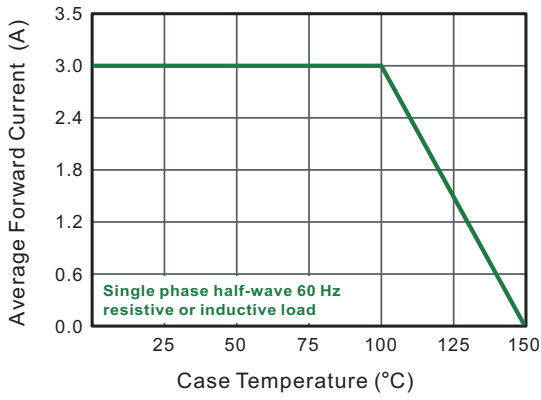
Parameter	Symbol	SS32F-PJ	SS34F-PJ	SS345F-PJ	SS36F-PJ	SS38F-PJ	SS310F-PJ	SS312F-PJ	SS315F-PJ	SS320F-PJ	Unit	
Maximum Repetitive Peak Reverse Voltage	V_{RRM}	20	40	45	60	80	100	120	150	200	V	
Maximum RMS Voltage	V_{RMS}	14	28	32	42	56	70	84	105	140	V	
Maximum DC Blocking Voltage	V_{DC}	20	40	45	60	80	100	120	150	200	V	
Maximum Average Forward Rectified Current	$I_{F(AV)}$	3.0									A	
Peak Forward Surge Current, 8.3ms Single Half Sine-wave Superimposed on Rated Load (JEDEC method)	I_{FSM}	80									A	
Maximum Instantaneous Forward Voltage at 3 A	V_F	0.55			0.70		0.85		0.95		V	
Maximum DC Reverse Current at Rated DC Blocking Voltage $T_A = 25\text{ }^\circ\text{C}$ $T_A = 100\text{ }^\circ\text{C}$	I_R	0.5				0.3					mA	
		5				3						
Typical Junction Capacitance ^{Note1}	C_j	250			180						pF	
Typical Thermal Resistance ^{Note2}	$R_{\theta JA}$ $R_{\theta JC}$	70					18					$^\circ\text{C/W}$
Operating Junction Temperature Range	T_J	-55 to +150									$^\circ\text{C}$	
Storage Temperature Range	T_{STG}	-55 to +150									$^\circ\text{C}$	

Note:

1. Measured at 1 MHz and applied reverse voltage of 4 V D.C
2. P.C.B. mounted with 2.0" X 2.0" (5 X 5 cm) copper pad areas.



Typical Characteristic Curves



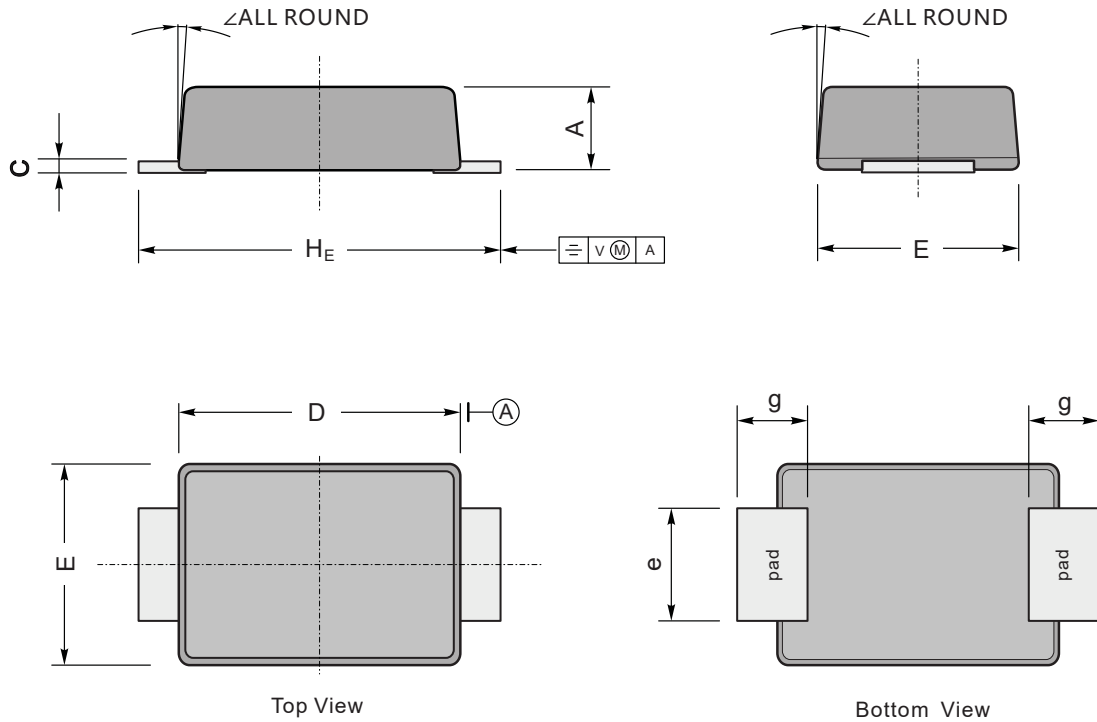


SS32F-PJ~SS320F-PJ Schottky Barrier Diode

Package Outline

SMAF

Dimensions in mm



UNIT		A	C	D	E	e	g	H_E	\angle
mm	max	1.2	0.20	3.7	2.7	1.6	1.2	4.9	7°
	min	0.9	0.12	3.3	2.4	1.3	0.8	4.4	
mil	max	47	7.9	146	106	63	47	193	
	min	35	4.7	130	94	51	31	173	