



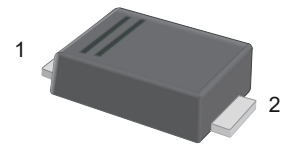
SSL310F-PJ

Schottky Barrier Diode

Features

- Low power loss, high efficiency
- For surface mounted applications
- High forward surge current capability

SMAF



1.Cathode  2.Anode

Marking Code :SL310

Absolute Maximum Ratings and Electrical Characteristics

Ratings at 25°C ambient temperature unless otherwise specified.

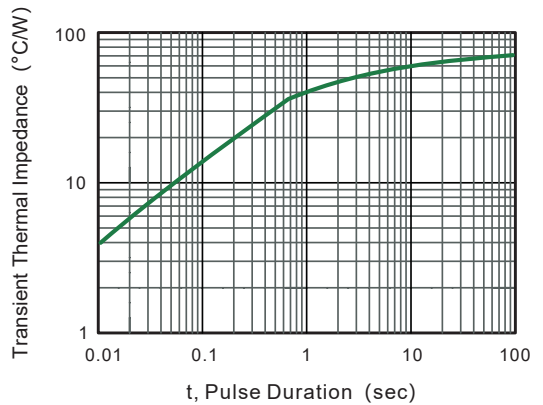
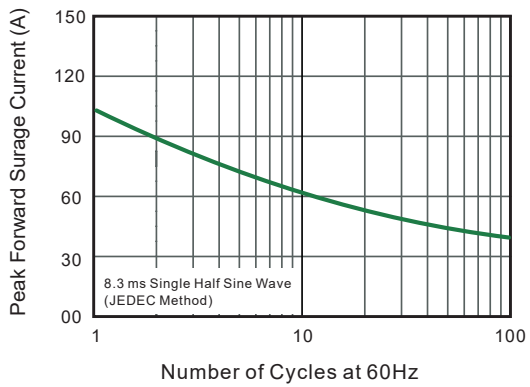
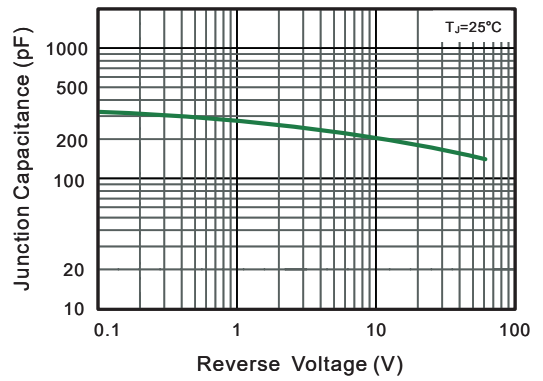
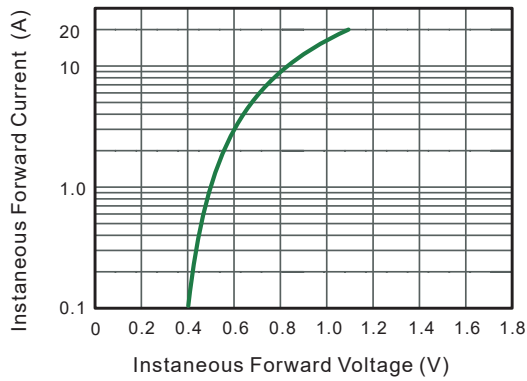
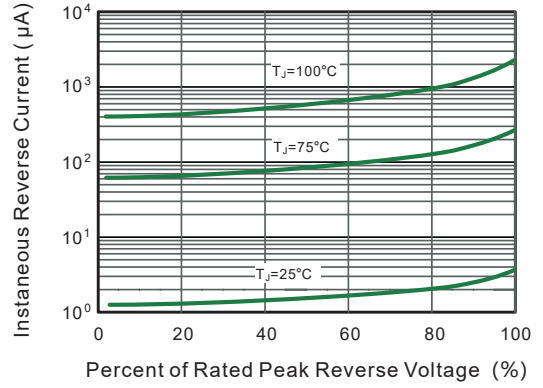
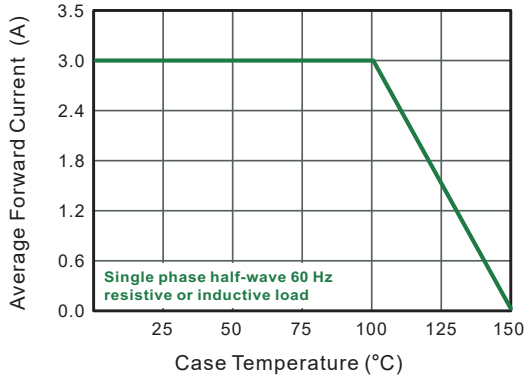
Parameter	Symbols	SSL310F-PJ	Units
Maximum Repetitive Peak Reverse Voltage	V_{RRM}	100	V
Maximum RMS Voltage	V_{RMS}	70	V
Maximum DC Blocking Voltage	V_{DC}	100	V
Maximum Average Forward Rectified Current	$I_{F(AV)}$	3	A
Peak Forward Surge Current 8.3 ms Single Half Sine Wave Superimposed on Rated Load (JEDEC method)	I_{FSM}	100	A
Maximum Instantaneous Forward Voltage at 3 A	V_F	0.6	V
Maximum DC Reverse Current at Rated DC Blocking Voltage $T_A = 25^\circ\text{C}$	I_R	0.1	mA
Typical Junction Capacitance ^{Note1}	C_J	180	pF
Typical Thermal Resistance ^{Note2}	$R_{\theta JA}$	65	$^\circ\text{C/W}$
Junction Temperature	T_J	150	$^\circ\text{C}$
Storage Temperature Range	T_{STG}	-55 to +150	$^\circ\text{C}$

Note:

1. Measured at 1 MHz and applied reverse voltage of 4 V D.C
2. P.C.B. mounted with 2.0" X 2.0" (5 X 5 cm) copper pad areas.



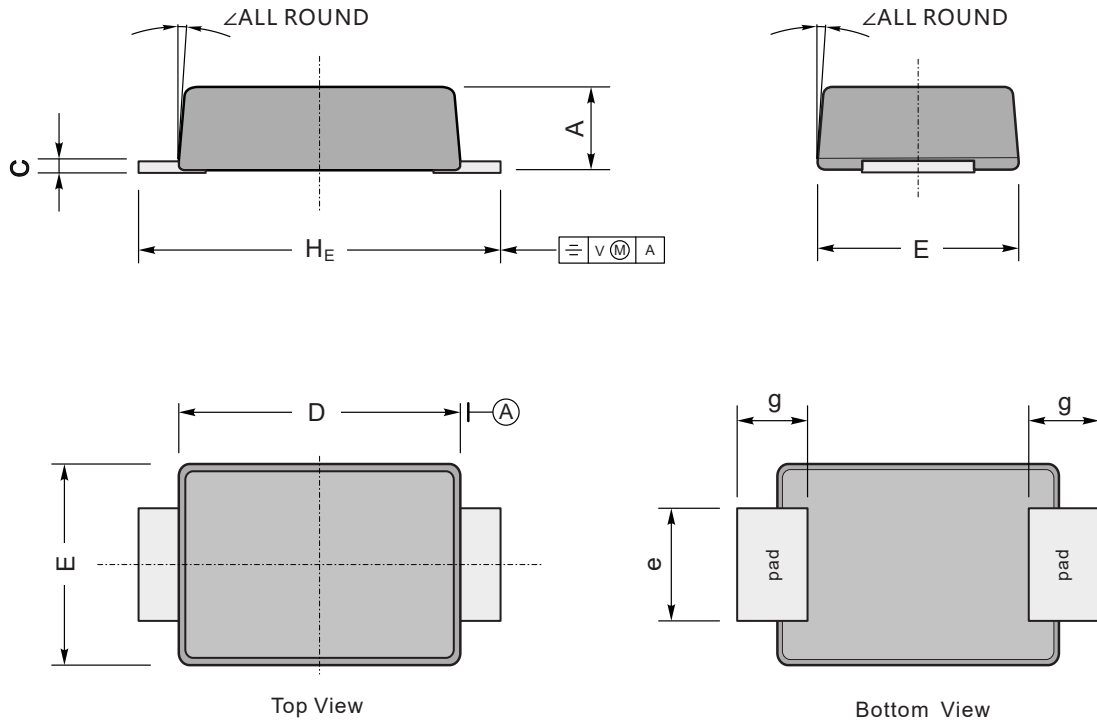
Typical Characteristic Curves



Package Outline

SMAF

Dimensions in mm



UNIT		A	C	D	E	e	g	H_E	\angle
mm	max	1.2	0.20	3.7	2.7	1.6	1.2	4.9	7°
	min	0.9	0.12	3.3	2.4	1.3	0.8	4.4	
mil	max	47	7.9	146	106	63	47	193	
	min	35	4.7	130	94	51	31	173	